



ELECTRONIC COPY

LG800618965
Report verification at igi.org



June 9, 2026

IGI Report Number **LG800618965**

Description **LABORATORY GROWN DIAMOND**

Shape and Cutting Style **OVAL BRILLIANT**

Measurements **18.10 X 11.24 X 6.67 MM**

GRADING RESULTS

Carat Weight **9.01 CARATS**

Color Grade **F**

Clarity Grade **VVS 2**

June 9, 2026

IGI Report Number **LG800618965**

Description **LABORATORY GROWN DIAMOND**

Shape and Cutting Style **OVAL BRILLIANT**

Measurements **18.10 X 11.24 X 6.67 MM**

GRADING RESULTS

Carat Weight **9.01 CARATS**

Color Grade **F**

Clarity Grade **VVS 2**

ADDITIONAL GRADING INFORMATION

Polish **EXCELLENT**

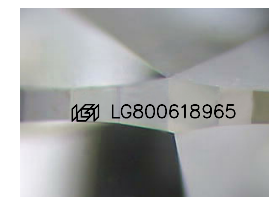
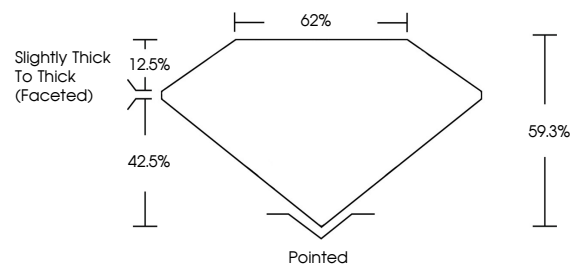
Symmetry **EXCELLENT**

Fluorescence **NONE**

Inscription(s) **IGI LG800618965**

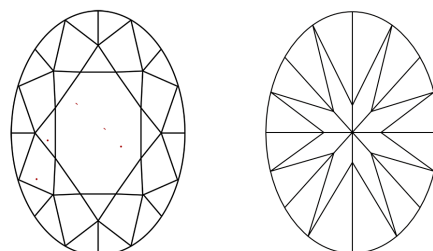
Comments: This Laboratory Grown Diamond was created by Chemical Vapor Deposition (CVD) growth process. Type IIa

PROPORTIONS



Sample Image Used

CLARITY CHARACTERISTICS



KEY TO SYMBOLS

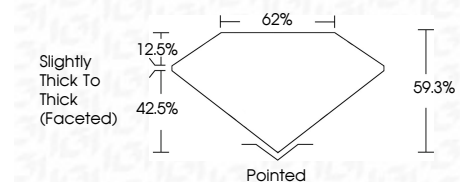
Red symbols indicate internal characteristics.
Green symbols indicate external characteristics.

COLOR

D E F G H I J Faint Very Light Light

CLARITY

FL	IF	VVS ¹⁻²	VS ¹⁻²	SI ¹⁻²	I ¹⁻³
Flawless	Internally Flawless	Very Very Slightly Included	Very Slightly Included	Slightly Included	Included



ADDITIONAL GRADING INFORMATION

Polish **EXCELLENT**

Symmetry **EXCELLENT**

Fluorescence **NONE**

Inscription(s) **IGI LG800618965**

Comments: This Laboratory Grown Diamond was created by Chemical Vapor Deposition (CVD) growth process. Type IIa



IGI



June 9, 2026
IGI Report No LG800618965
OVAL BRILLIANT
18.10 X 11.24 X 6.67 MM
9.01 CARATS
F
VVS 2
EXCELLENT
EXCELLENT
NONE
IGI LG800618965

Comments: This Laboratory Grown Diamond was created by Chemical Vapor Deposition (CVD) growth process. Type IIa