



ELECTRONIC COPY

LG800618945
Report verification at igi.org



June 3, 2026
IGI Report Number **LG800618945**
Description **LABORATORY GROWN DIAMOND**
Shape and Cutting Style **ROUND BRILLIANT**
Measurements **8.64 - 8.70 X 5.28 MM**
GRADING RESULTS
Carat Weight **2.42 CARATS**
Color Grade **D**
Clarity Grade **FLAWLESS**
Cut Grade **IDEAL**

June 3, 2026
IGI Report Number **LG800618945**
Description **LABORATORY GROWN DIAMOND**
Shape and Cutting Style **ROUND BRILLIANT**
Measurements **8.64 - 8.70 X 5.28 MM**

GRADING RESULTS

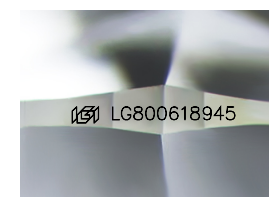
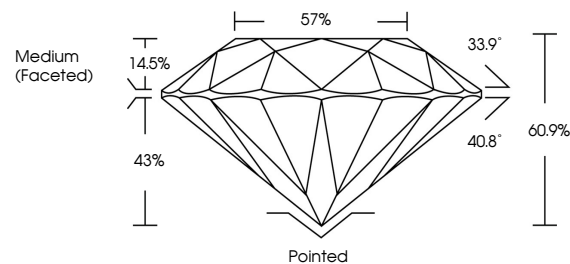
Carat Weight **2.42 CARATS**
Color Grade **D**
Clarity Grade **FLAWLESS**
Cut Grade **IDEAL**

ADDITIONAL GRADING INFORMATION

Polish **EXCELLENT**
Symmetry **EXCELLENT**
Fluorescence **NONE**
Inscription(s) **LG800618945**

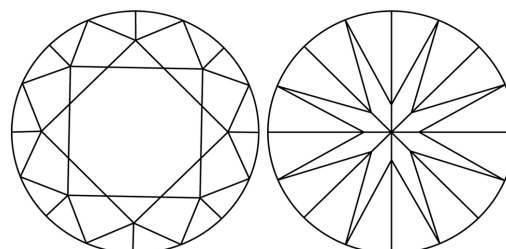
Comments: HEARTS & ARROWS
As Grown - No indication of post-growth treatment.
This Laboratory Grown Diamond was created by High Pressure High Temperature (HPHT) growth process.
Type II

PROPORTIONS



Sample Image Used

CLARITY CHARACTERISTICS



KEY TO SYMBOLS

Red symbols indicate internal characteristics.
Green symbols indicate external characteristics.

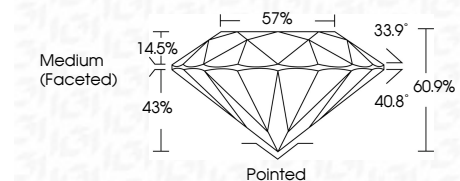


COLOR

D E F G H I J Faint Very Light Light

CLARITY

FL	IF	VS ¹⁻²	VS ¹⁻²	SI ¹⁻²	I ¹⁻³
Flawless	Internally Flawless	Very Very Slightly Included	Very Slightly Included	Slightly Included	Included



ADDITIONAL GRADING INFORMATION

Polish **EXCELLENT**
Symmetry **EXCELLENT**
Fluorescence **NONE**
Inscription(s) **LG800618945**
Comments: HEARTS & ARROWS
As Grown - No indication of post-growth treatment.
This Laboratory Grown Diamond was created by High Pressure High Temperature (HPHT) growth process.
Type II



June 3, 2026
IGI Report No LG800618945
ROUND BRILLIANT
8.64 - 8.70 X 5.28 MM
2.42 CARATS
D
FLAWLESS
IDEAL
60.9%
57%
Medium (Faceted)
Pointed
EXCELLENT
EXCELLENT
NONE
NONE
IGI LG800618945
Comments: HEARTS & ARROWS
As Grown - No indication of post-growth treatment.
This Laboratory Grown Diamond was created by High Pressure High Temperature (HPHT) growth process.
Type II