



**ELECTRONIC COPY**

LG800618789  
Report verification at igi.org



June 3, 2026  
IGI Report Number **LG800618789**  
Description **LABORATORY GROWN DIAMOND**  
Shape and Cutting Style **CUT CORNERED  
RECTANGULAR MODIFIED  
BRILLIANT**  
Measurements **9.66 X 6.87 X 4.92 MM**  
**GRADING RESULTS**  
Carat Weight **3.01 CARATS**  
Color Grade **FANCY INTENSE PINK**  
Clarity Grade **VS 1**

**LABORATORY GROWN DIAMOND REPORT**

June 3, 2026  
IGI Report Number **LG800618789**  
Description **LABORATORY GROWN DIAMOND**  
Shape and Cutting Style **CUT CORNERED RECTANGULAR  
MODIFIED BRILLIANT**  
Measurements **9.66 X 6.87 X 4.92 MM**

**GRADING RESULTS**

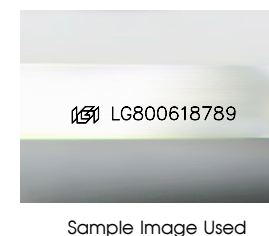
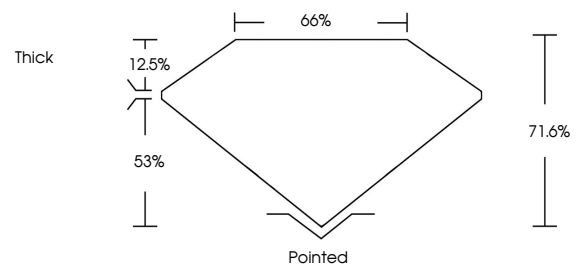
Carat Weight **3.01 CARATS**  
Color Grade **FANCY INTENSE PINK**  
Clarity Grade **VS 1**

**ADDITIONAL GRADING INFORMATION**

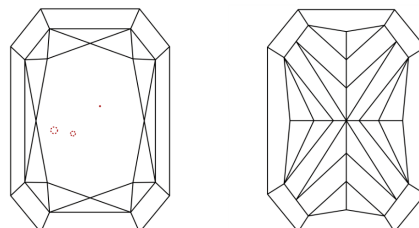
Polish **EXCELLENT**  
Symmetry **EXCELLENT**  
Fluorescence **SLIGHT**  
Inscription(s) **IGI LG800618789**

Comments: This Laboratory Grown Diamond was created by Chemical Vapor Deposition (CVD) growth process.  
Indications of post-growth treatment.

**PROPORTIONS**



**CLARITY CHARACTERISTICS**



**KEY TO SYMBOLS**

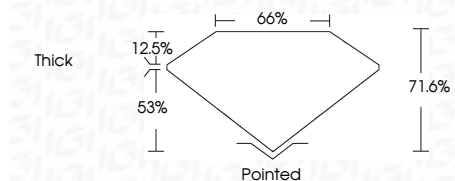
Red symbols indicate internal characteristics.  
Green symbols indicate external characteristics.

**COLOR**

D E F G H I J Faint Very Light Light

**CLARITY**

FL	IF	VS <sup>1-2</sup>	VS <sup>1-2</sup>	SI <sup>1-2</sup>	I <sup>1-3</sup>
Flawless	Internally Flawless	Very Very Slightly Included	Very Slightly Included	Slightly Included	Included



**ADDITIONAL GRADING INFORMATION**

Polish **EXCELLENT**  
Symmetry **EXCELLENT**  
Fluorescence **SLIGHT**  
Inscription(s) **IGI LG800618789**  
Comments: This Laboratory Grown Diamond was created by Chemical Vapor Deposition (CVD) growth process.  
Indications of post-growth treatment.



June 3, 2026  
IGI Report No LG800618789  
CUT CORNERED RECT. MODIFIED BRILLIANT  
9.66 X 6.87 X 4.92 MM  
3.01 CARATS  
FANCY INTENSE PINK  
VS 1  
71.6%  
65%  
Thick  
Pointed  
EXCELLENT  
EXCELLENT  
SLIGHT  
IGI LG800618789  
Comments: This Laboratory Grown Diamond was created by Chemical Vapor Deposition (CVD) growth process.  
Indications of post-growth treatment.