



ELECTRONIC COPY

LG800618735
Report verification at igi.org



June 3, 2026
IGI Report Number **LG800618735**
Description **LABORATORY GROWN DIAMOND**
Shape and Cutting Style **EMERALD CUT**
Measurements **7.64 X 5.06 X 3.32 MM**
GRADING RESULTS
Carat Weight **1.33 CARAT**
Color Grade **FANCY VIVID GREEN**
Clarity Grade **VS 1**

June 3, 2026
IGI Report Number **LG800618735**
Description **LABORATORY GROWN DIAMOND**
Shape and Cutting Style **EMERALD CUT**
Measurements **7.64 X 5.06 X 3.32 MM**

GRADING RESULTS

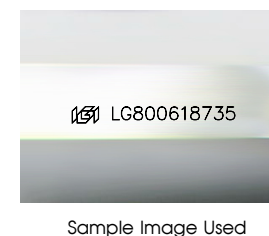
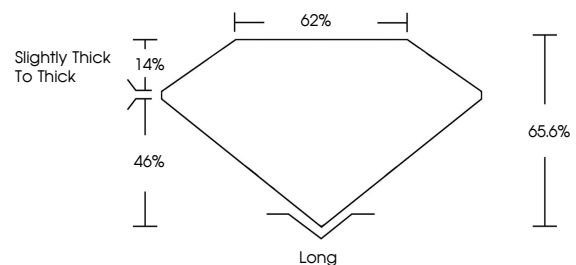
Carat Weight **1.33 CARAT**
Color Grade **FANCY VIVID GREEN**
Clarity Grade **VS 1**

ADDITIONAL GRADING INFORMATION

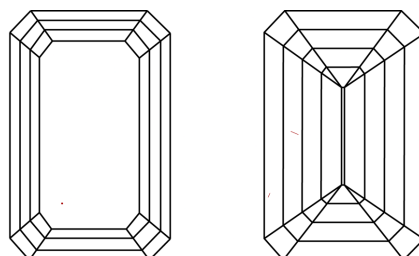
Polish **EXCELLENT**
Symmetry **EXCELLENT**
Fluorescence **VERY SLIGHT**
Inscription(s) **IGI LG800618735**

Comments: This Laboratory Grown Diamond was created by Chemical Vapor Deposition (CVD) growth process.
Indications of post-growth treatment.

PROPORTIONS



CLARITY CHARACTERISTICS



KEY TO SYMBOLS

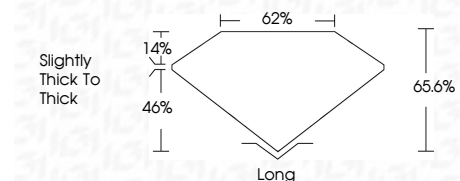
Red symbols indicate internal characteristics.
Green symbols indicate external characteristics.

COLOR

D E F G H I J Faint Very Light Light

CLARITY

FL	IF	VS ¹⁻²	VS ¹⁻²	SI ¹⁻²	I ¹⁻³
Flawless	Internally Flawless	Very Very Slightly Included	Very Slightly Included	Slightly Included	Included



ADDITIONAL GRADING INFORMATION

Polish **EXCELLENT**
Symmetry **EXCELLENT**
Fluorescence **VERY SLIGHT**
Inscription(s) **IGI LG800618735**
Comments: This Laboratory Grown Diamond was created by Chemical Vapor Deposition (CVD) growth process.
Indications of post-growth treatment.



June 3, 2026
IGI Report No. **LG800618735**
EMERALD CUT
7.64 X 5.06 X 3.32 MM
Carat Weight **1.33 CARAT**
Color Grade **FANCY VIVID GREEN**
Clarity Grade **VS 1**
Depth **65.6%**
Table **62%**
Girdle **Slightly thick to thick**
Culet **Long**
Polish **EXCELLENT**
Symmetry **EXCELLENT**
Fluorescence **VERY SLIGHT**
Inscription(s) **IGI LG800618735**
Comments: This Laboratory Grown Diamond was created by Chemical Vapor Deposition (CVD) growth process.
Indications of post-growth treatment.