



ELECTRONIC COPY

LG800616685
Report verification at igi.org



May 15, 2026
IGI Report Number **LG800616685**
Description **LABORATORY GROWN DIAMOND**
Shape and Cutting Style **CUT CORNERED SQUARE
MODIFIED BRILLIANT**
Measurements **8.40 X 8.06 X 5.48 MM**
GRADING RESULTS
Carat Weight **3.61 CARATS**
Color Grade **FANCY DEEP PINK**
Clarity Grade **SI 2**

LABORATORY GROWN DIAMOND REPORT

May 15, 2026
IGI Report Number **LG800616685**
Description **LABORATORY GROWN DIAMOND**
Shape and Cutting Style **CUT CORNERED SQUARE
MODIFIED BRILLIANT**
Measurements **8.40 X 8.06 X 5.48 MM**

GRADING RESULTS

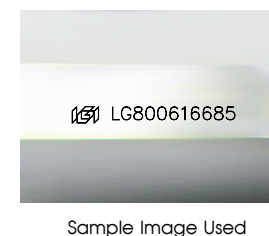
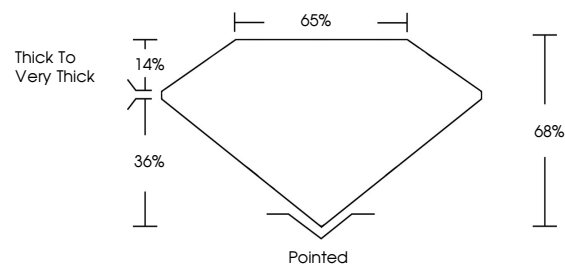
Carat Weight **3.61 CARATS**
Color Grade **FANCY DEEP PINK**
Clarity Grade **SI 2**

ADDITIONAL GRADING INFORMATION

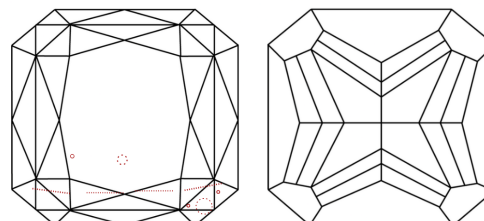
Polish **EXCELLENT**
Symmetry **EXCELLENT**
Fluorescence **VERY SLIGHT**
Inscription(s) **IGI LG800616685**

Comments: This Laboratory Grown Diamond was created by Chemical Vapor Deposition (CVD) growth process.
Indications of post-growth treatment.

PROPORTIONS



CLARITY CHARACTERISTICS



KEY TO SYMBOLS

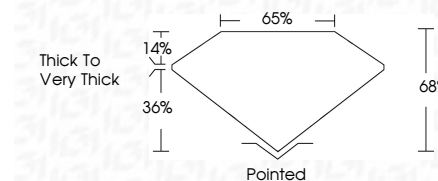
Red symbols indicate internal characteristics.
Green symbols indicate external characteristics.

COLOR

D E F G H I J Faint Very Light Light

CLARITY

FL	IF	VS ¹⁻²	VS ¹⁻²	SI ¹⁻²	I ¹⁻³
Flawless	Internally Flawless	Very Very Slightly Included	Very Slightly Included	Slightly Included	Included



ADDITIONAL GRADING INFORMATION

Polish **EXCELLENT**
Symmetry **EXCELLENT**
Fluorescence **VERY SLIGHT**
Inscription(s) **IGI LG800616685**
Comments: This Laboratory Grown Diamond was created by Chemical Vapor Deposition (CVD) growth process.
Indications of post-growth treatment.



IGI



May 15, 2026
IGI Report No LG800616685
CUT CORNERED SQUARE MODIFIED BRILLIANT
8.40 X 8.06 X 5.48 MM
3.61 CARATS
FANCY DEEP PINK
SI 2
68%
65%
Thick to Very Thick
Pointed
EXCELLENT
EXCELLENT
VERY SLIGHT
IGI LG800616685
Comments: This Laboratory Grown Diamond was created by Chemical Vapor Deposition (CVD) growth process.
Indications of post-growth treatment.