



ELECTRONIC COPY

LG800616303
Report verification at igi.org



June 1, 2026
IGI Report Number **LG800616303**
Description **LABORATORY GROWN DIAMOND**
Shape and Cutting Style **CUT CORNERED
RECTANGULAR MODIFIED
BRILLIANT**
Measurements **13.05 X 9.07 X 5.97 MM**
GRADING RESULTS
Carat Weight **6.01 CARATS**
Color Grade **FANCY INTENSE PINK**
Clarity Grade **SI 1**

LABORATORY GROWN DIAMOND REPORT

June 1, 2026
IGI Report Number **LG800616303**
Description **LABORATORY GROWN DIAMOND**
Shape and Cutting Style **CUT CORNERED RECTANGULAR
MODIFIED BRILLIANT**
Measurements **13.05 X 9.07 X 5.97 MM**

GRADING RESULTS

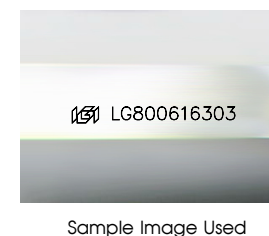
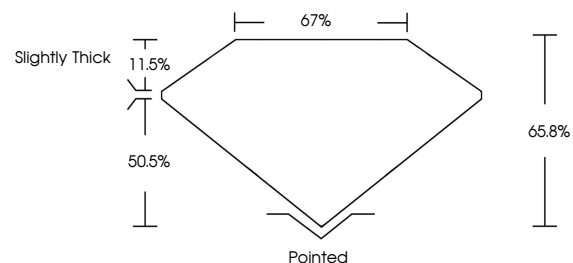
Carat Weight **6.01 CARATS**
Color Grade **FANCY INTENSE PINK**
Clarity Grade **SI 1**

ADDITIONAL GRADING INFORMATION

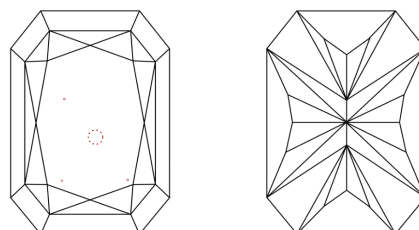
Polish **EXCELLENT**
Symmetry **EXCELLENT**
Fluorescence **SLIGHT**
Inscription(s) **LG800616303**

Comments: This Laboratory Grown Diamond was created by Chemical Vapor Deposition (CVD) growth process.
Indications of post-growth treatment.

PROPORTIONS



CLARITY CHARACTERISTICS



KEY TO SYMBOLS

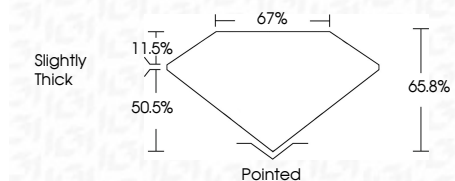
Red symbols indicate internal characteristics.
Green symbols indicate external characteristics.

COLOR

D E F G H I J Faint Very Light Light

CLARITY

FL	IF	VS ¹⁻²	VS ¹⁻²	SI ¹⁻²	I ¹⁻³
Flawless	Internally Flawless	Very Very Slightly Included	Very Slightly Included	Slightly Included	Included



ADDITIONAL GRADING INFORMATION

Polish **EXCELLENT**
Symmetry **EXCELLENT**
Fluorescence **SLIGHT**
Inscription(s) **LG800616303**
Comments: This Laboratory Grown Diamond was created by Chemical Vapor Deposition (CVD) growth process.
Indications of post-growth treatment.



June 1, 2026
IGI Report No **LG800616303**
CUT CORNERED RECT. MODIFIED BRILLIANT
13.05 X 9.07 X 5.97 MM
Carat Weight **6.01 CARATS**
Color Grade **FANCY INTENSE PINK**
Clarity Grade **SI 1**
Depth **65.8%**
Table **67%**
Girdle **Slightly Thick**
Culet **Pointed**
Polish **EXCELLENT**
Symmetry **EXCELLENT**
Fluorescence **SLIGHT**
Inscription(s) **LG800616303**
Comments: This Laboratory Grown Diamond was created by Chemical Vapor Deposition (CVD) growth process.
Indications of post-growth treatment.