



ELECTRONIC COPY

LG800616022
Report verification at igi.org



May 21, 2026
IGI Report Number **LG800616022**
Description **LABORATORY GROWN DIAMOND**
Shape and Cutting Style **SQUARE CUSHION MODIFIED BRILLIANT**
Measurements **6.20 X 6.04 X 3.97 MM**
GRADING RESULTS
Carat Weight **1.20 CARAT**
Color Grade **FANCY VIVID BLUE**
Clarity Grade **VS 1**

LABORATORY GROWN DIAMOND REPORT

May 21, 2026
IGI Report Number **LG800616022**
Description **LABORATORY GROWN DIAMOND**
Shape and Cutting Style **SQUARE CUSHION MODIFIED BRILLIANT**
Measurements **6.20 X 6.04 X 3.97 MM**

GRADING RESULTS

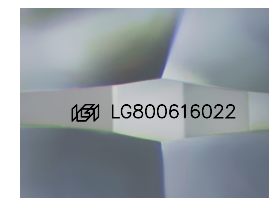
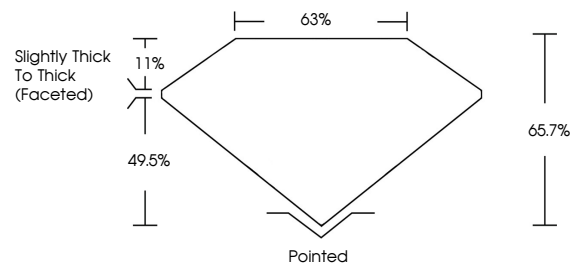
Carat Weight **1.20 CARAT**
Color Grade **FANCY VIVID BLUE**
Clarity Grade **VS 1**

ADDITIONAL GRADING INFORMATION

Polish **EXCELLENT**
Symmetry **EXCELLENT**
Fluorescence **NONE**
Inscription(s) **IGI LG800616022**

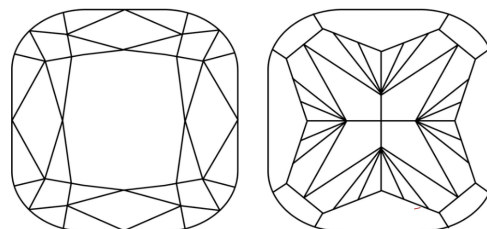
Comments: This Laboratory Grown Diamond was created by Chemical Vapor Deposition (CVD) growth process.
Indications of post-growth treatment.

PROPORTIONS



Sample Image Used

CLARITY CHARACTERISTICS



KEY TO SYMBOLS

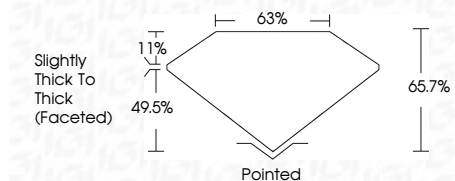
Red symbols indicate internal characteristics.
Green symbols indicate external characteristics.

COLOR

D E F G H I J Faint Very Light Light

CLARITY

FL	IF	VS ¹⁻²	VS ¹⁻²	SI ¹⁻²	I ¹⁻³
Flawless	Internally Flawless	Very Very Slightly Included	Very Slightly Included	Slightly Included	Included



ADDITIONAL GRADING INFORMATION

Polish **EXCELLENT**
Symmetry **EXCELLENT**
Fluorescence **NONE**
Inscription(s) **IGI LG800616022**
Comments: This Laboratory Grown Diamond was created by Chemical Vapor Deposition (CVD) growth process.
Indications of post-growth treatment.



IGI



May 21, 2026
IGI Report No. **LG800616022**
SQUARE CUSHION MODIFIED BRILLIANT
6.20 X 6.04 X 3.97 MM
1.20 CARAT
Carat Weight
Color Grade **FANCY VIVID BLUE**
Clarity Grade **VS 1**
Depth **65.7%**
Table **63%**
Girdle **Slightly Thick To Thick (Faceted)**
Culet **Pointed**
Polish **EXCELLENT**
Symmetry **EXCELLENT**
Fluorescence **NONE**
Inscription(s) **IGI LG800616022**
Comments: This Laboratory Grown Diamond was created by Chemical Vapor Deposition (CVD) growth process.
Indications of post-growth treatment.