



ELECTRONIC COPY

LG800615095
Report verification at igi.org



June 5, 2026
IGI Report Number **LG800615095**
Description **LABORATORY GROWN DIAMOND**
Shape and Cutting Style **MARQUISE BRILLIANT**
Measurements **10.35 X 5.39 X 3.38 MM**
GRADING RESULTS
Carat Weight **1.06 CARAT**
Color Grade **FANCY VIVID PINK**
Clarity Grade **VVS 2**

June 5, 2026
IGI Report Number **LG800615095**
Description **LABORATORY GROWN DIAMOND**
Shape and Cutting Style **MARQUISE BRILLIANT**
Measurements **10.35 X 5.39 X 3.38 MM**

GRADING RESULTS

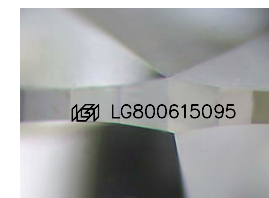
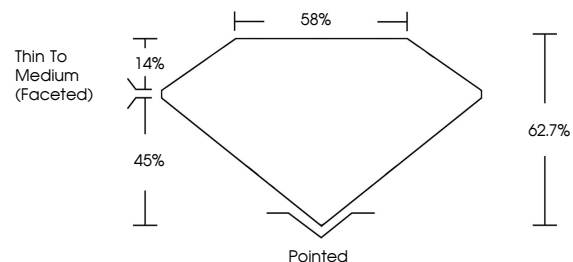
Carat Weight **1.06 CARAT**
Color Grade **FANCY VIVID PINK**
Clarity Grade **VVS 2**

ADDITIONAL GRADING INFORMATION

Polish **EXCELLENT**
Symmetry **VERY GOOD**
Fluorescence **SLIGHT**
Inscription(s) **LG800615095**

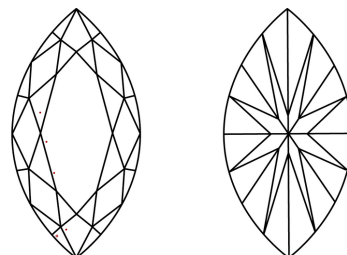
Comments: This Laboratory Grown Diamond was created by Chemical Vapor Deposition (CVD) growth process.
Indications of post-growth treatment.

PROPORTIONS



Sample Image Used

CLARITY CHARACTERISTICS



KEY TO SYMBOLS

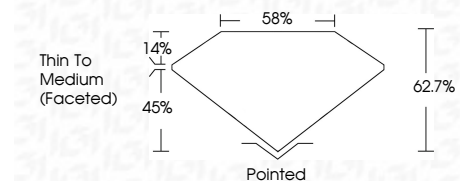
Red symbols indicate internal characteristics.
Green symbols indicate external characteristics.

COLOR

D E F G H I J Faint Very Light Light

CLARITY

FL	IF	VVS ¹⁻²	VS ¹⁻²	SI ¹⁻²	I ¹⁻³
Flawless	Internally Flawless	Very Very Slightly Included	Very Slightly Included	Slightly Included	Included



ADDITIONAL GRADING INFORMATION

Polish **EXCELLENT**
Symmetry **VERY GOOD**
Fluorescence **SLIGHT**
Inscription(s) **LG800615095**
Comments: This Laboratory Grown Diamond was created by Chemical Vapor Deposition (CVD) growth process.
Indications of post-growth treatment.



June 5, 2026
IGI Report No. LG800615095
MARQUISE BRILLIANT
10.35 X 5.39 X 3.38 MM
1.06 CARAT
FANCY VIVID PINK
VVS 2
62.7%
58%
Thin To Medium (Faceted)
Pointed
EXCELLENT
VERY GOOD
SLIGHT
IGI LG800615095

Comments: This Laboratory Grown Diamond was created by Chemical Vapor Deposition (CVD) growth process.
Indications of post-growth treatment.