



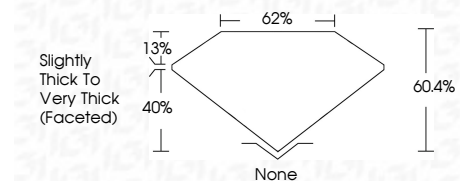
ELECTRONIC COPY

LG800615087
Report verification at igi.org



June 5, 2026
IGI Report Number **LG800615087**
Description **LABORATORY GROWN DIAMOND**
Shape and Cutting Style **OVAL MODIFIED BRILLIANT**
Measurements **9.43 X 6.84 X 4.13 MM**

GRADING RESULTS
Carat Weight **2.08 CARATS**
Color Grade **LIGHT YELLOW**
Clarity Grade **VS 1**



ADDITIONAL GRADING INFORMATION
Polish **VERY GOOD**
Symmetry **EXCELLENT**
Fluorescence **NONE**
Inscription(s) **IGI LG800615087**
Comments: This Laboratory Grown Diamond was created by Chemical Vapor Deposition (CVD) growth process. Type IIa

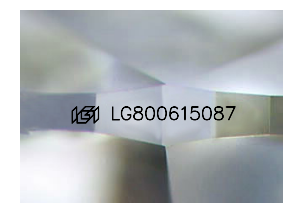
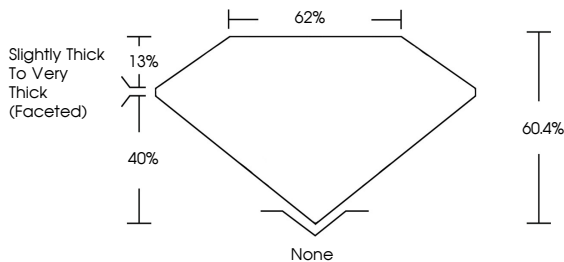


June 5, 2026
IGI Report No. LG800615087
OVAL MODIFIED BRILLIANT
9.43 X 6.84 X 4.13 MM
2.08 CARATS
LIGHT YELLOW
Color Grade
VS 1
Depth 60.4%
Table 62%
Girdle Slightly Thick To Very Thick (Faceted)
Culet None
Polish VERY GOOD
Symmetry EXCELLENT
Fluorescence NONE
Inscription(s) IGI LG800615087
Comments: This Laboratory Grown Diamond was created by Chemical Vapor Deposition (CVD) growth process. Type IIa

June 5, 2026
IGI Report Number **LG800615087**
Description **LABORATORY GROWN DIAMOND**
Shape and Cutting Style **OVAL MODIFIED BRILLIANT**
Measurements **9.43 X 6.84 X 4.13 MM**
GRADING RESULTS
Carat Weight **2.08 CARATS**
Color Grade **LIGHT YELLOW**
Clarity Grade **VS 1**
ADDITIONAL GRADING INFORMATION
Polish **VERY GOOD**
Symmetry **EXCELLENT**
Fluorescence **NONE**
Inscription(s) **IGI LG800615087**

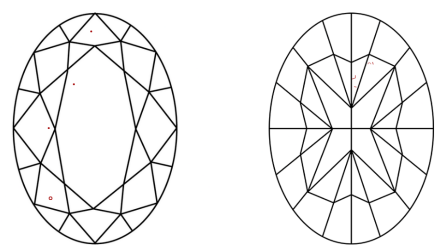
Comments: This Laboratory Grown Diamond was created by Chemical Vapor Deposition (CVD) growth process. Type IIa

PROPORTIONS



Sample Image Used

CLARITY CHARACTERISTICS



KEY TO SYMBOLS
Red symbols indicate internal characteristics.
Green symbols indicate external characteristics.

COLOR

D	E	F	G	H	I	J	Faint	Very Light	Light
---	---	---	---	---	---	---	-------	------------	-------

CLARITY

FL	IF	VS ¹⁻²	VS ¹⁻²	SI ¹⁻²	I ¹⁻³
Flawless	Internally Flawless	Very Very Slightly Included	Very Slightly Included	Slightly Included	Included

