



**ELECTRONIC COPY**

LG800615045  
Report verification at igi.org



June 4, 2026

IGI Report Number **LG800615045**

Description **LABORATORY GROWN DIAMOND**

Shape and Cutting Style **PEAR MODIFIED BRILLIANT**

Measurements **8.32 X 5.31 X 3.29 MM**

**GRADING RESULTS**

Carat Weight **1.06 CARAT**

Color Grade **FANCY YELLOW**

Clarity Grade **VVS 2**

June 4, 2026

IGI Report Number **LG800615045**

Description **LABORATORY GROWN DIAMOND**

Shape and Cutting Style **PEAR MODIFIED BRILLIANT**

Measurements **8.32 X 5.31 X 3.29 MM**

**GRADING RESULTS**

Carat Weight **1.06 CARAT**

Color Grade **FANCY YELLOW**

Clarity Grade **VVS 2**

**ADDITIONAL GRADING INFORMATION**

Polish **EXCELLENT**

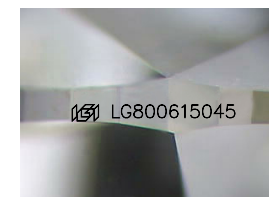
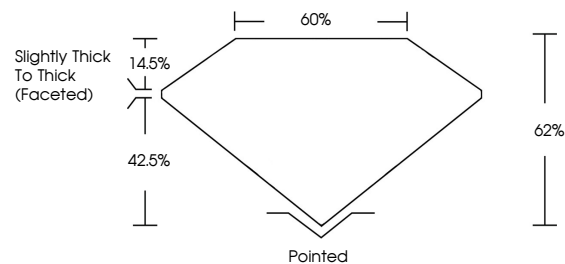
Symmetry **EXCELLENT**

Fluorescence **NONE**

Inscription(s) **IGI LG800615045**

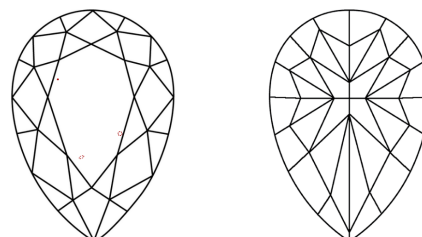
Comments: This Laboratory Grown Diamond was created by Chemical Vapor Deposition (CVD) growth process.

**PROPORTIONS**



Sample Image Used

**CLARITY CHARACTERISTICS**



**KEY TO SYMBOLS**

Red symbols indicate internal characteristics.  
Green symbols indicate external characteristics.

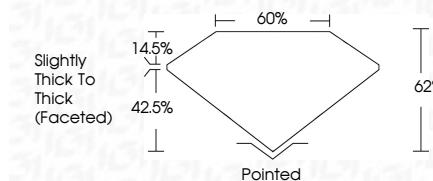
**COLOR**

D E F G H I J Faint Very Light Light

**CLARITY**

FL IF VVS<sup>1-2</sup> VS<sup>1-2</sup> SI<sup>1-2</sup> I<sup>1-3</sup>

Flawless Internally Flawless Very Very Slightly Included Very Slightly Included Slightly Included Included



**ADDITIONAL GRADING INFORMATION**

Polish **EXCELLENT**

Symmetry **EXCELLENT**

Fluorescence **NONE**

Inscription(s) **IGI LG800615045**

Comments: This Laboratory Grown Diamond was created by Chemical Vapor Deposition (CVD) growth process.



June 4, 2026  
IGI Report No LG800615045  
**PEAR MODIFIED BRILLIANT**  
8.32 X 5.31 X 3.29 MM  
1.06 CARAT  
FANCY YELLOW  
VVS 2  
62%  
60%  
Slightly Thick To Thick (Faceted)  
Pointed  
EXCELLENT  
EXCELLENT  
NONE  
IGI LG800615045

Comments: This Laboratory Grown Diamond was created by Chemical Vapor Deposition (CVD) growth process.