



**ELECTRONIC COPY**

LG800614649  
Report verification at igi.org



June 2, 2026

IGI Report Number **LG800614649**

Description **LABORATORY GROWN DIAMOND**

Shape and Cutting Style **PEAR MODIFIED BRILLIANT**

Measurements **9.10 X 5.29 X 3.34 MM**

**GRADING RESULTS**

Carat Weight **1.14 CARAT**

Color Grade **FANCY VIVID PINK**

Clarity Grade **VS 2**

June 2, 2026

IGI Report Number **LG800614649**

Description **LABORATORY GROWN DIAMOND**

Shape and Cutting Style **PEAR MODIFIED BRILLIANT**

Measurements **9.10 X 5.29 X 3.34 MM**

**GRADING RESULTS**

Carat Weight **1.14 CARAT**

Color Grade **FANCY VIVID PINK**

Clarity Grade **VS 2**

**ADDITIONAL GRADING INFORMATION**

Polish **VERY GOOD**

Symmetry **FAIR**

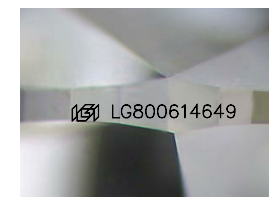
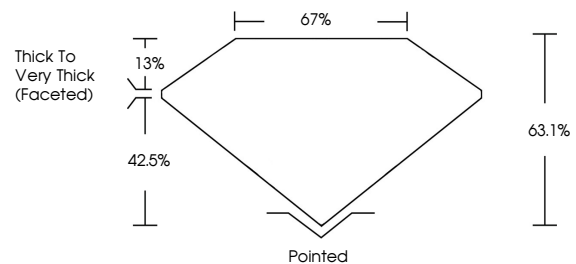
Fluorescence **SLIGHT**

Inscription(s) **IGI LG800614649**

Comments: This Laboratory Grown Diamond was created by Chemical Vapor Deposition (CVD) growth process.

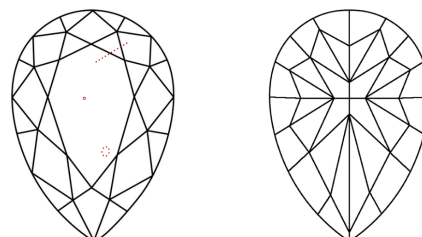
Indications of post-growth treatment.

**PROPORTIONS**



Sample Image Used

**CLARITY CHARACTERISTICS**



**KEY TO SYMBOLS**

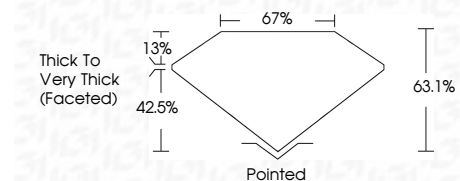
Red symbols indicate internal characteristics.  
Green symbols indicate external characteristics.

**COLOR**

D E F G H I J Faint Very Light Light

**CLARITY**

FL	IF	VS <sup>1-2</sup>	VS <sup>1-2</sup>	SI <sup>1-2</sup>	I <sup>1-3</sup>
Flawless	Internally Flawless	Very Very Slightly Included	Very Slightly Included	Slightly Included	Included



**ADDITIONAL GRADING INFORMATION**

Polish **VERY GOOD**

Symmetry **FAIR**

Fluorescence **SLIGHT**

Inscription(s) **IGI LG800614649**

Comments: This Laboratory Grown Diamond was created by Chemical Vapor Deposition (CVD) growth process.

Indications of post-growth treatment.



June 2, 2026  
IGI Report No LG800614649  
**PEAR MODIFIED BRILLIANT**

1.14 CARAT  
Carat Weight  
Color Grade **FANCY VIVID PINK**  
Clarity Grade **VS 2**  
Depth **63.1%**  
Table **67%**  
Girdle **Thick to Very Thick (Faceted)**

Culet **Pointed**  
Polish **VERY GOOD**  
Symmetry **FAIR**  
Fluorescence **SLIGHT**  
Inscription(s) **IGI LG800614649**

Comments: This Laboratory Grown Diamond was created by Chemical Vapor Deposition (CVD) growth process. Indications of post-growth treatment.