



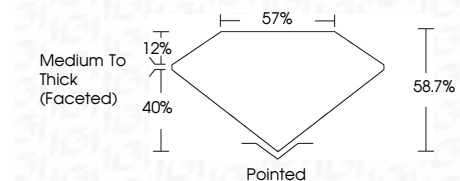
ELECTRONIC COPY

LG800614639
Report verification at igi.org



June 2, 2026
IGI Report Number **LG800614639**
Description **LABORATORY GROWN DIAMOND**
Shape and Cutting Style **PEAR MODIFIED BRILLIANT**
Measurements **8.71 X 5.18 X 3.04 MM**

GRADING RESULTS
Carat Weight **1.01 CARAT**
Color Grade **FANCY VIVID BLUE**
Clarity Grade **SI 2**



ADDITIONAL GRADING INFORMATION
Polish **VERY GOOD**
Symmetry **VERY GOOD**
Fluorescence **NONE**
Inscription(s) **IGI LG800614639**
Comments: This Laboratory Grown Diamond was created by Chemical Vapor Deposition (CVD) growth process. Indications of post-growth treatment.



June 2, 2026
IGI Report No LG800614639
PEAR MODIFIED BRILLIANT
8.71 X 5.18 X 3.04 MM
1.01 CARAT
FANCY VIVID BLUE
SI 2
58.7%
07%
Medium to Thick (Faceted)
Pointed
VERY GOOD
VERY GOOD
NONE
IGI LG800614639
Comments: This Laboratory Grown Diamond was created by Chemical Vapor Deposition (CVD) growth process. Indications of post-growth treatment.

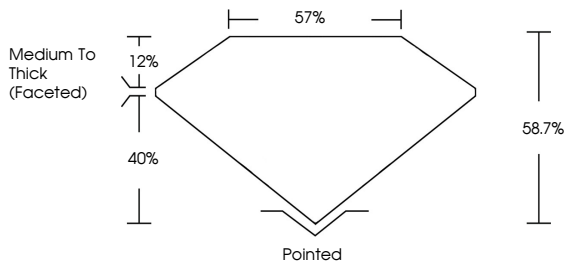
June 2, 2026
IGI Report Number **LG800614639**
Description **LABORATORY GROWN DIAMOND**
Shape and Cutting Style **PEAR MODIFIED BRILLIANT**
Measurements **8.71 X 5.18 X 3.04 MM**

GRADING RESULTS
Carat Weight **1.01 CARAT**
Color Grade **FANCY VIVID BLUE**
Clarity Grade **SI 2**

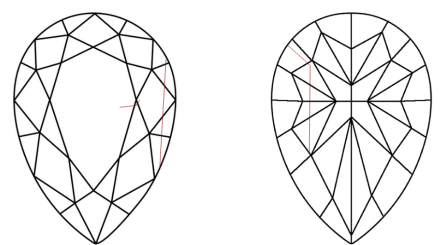
ADDITIONAL GRADING INFORMATION
Polish **VERY GOOD**
Symmetry **VERY GOOD**
Fluorescence **NONE**
Inscription(s) **IGI LG800614639**

Comments: This Laboratory Grown Diamond was created by Chemical Vapor Deposition (CVD) growth process. Indications of post-growth treatment.

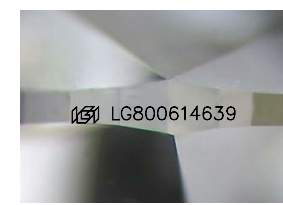
PROPORTIONS



CLARITY CHARACTERISTICS



KEY TO SYMBOLS
Red symbols indicate internal characteristics.
Green symbols indicate external characteristics.



Sample Image Used

COLOR

D	E	F	G	H	I	J	Faint	Very Light	Light
---	---	---	---	---	---	---	-------	------------	-------

CLARITY

FL	IF	VS ¹⁻²	VS ¹⁻²	SI ¹⁻²	I ¹⁻³
Flawless	Internally Flawless	Very Very Slightly Included	Very Slightly Included	Slightly Included	Included

