



**ELECTRONIC COPY**

LG800614280  
Report verification at [igi.org](http://igi.org)



June 1, 2026  
IGI Report Number **LG800614280**  
Description **LABORATORY GROWN DIAMOND**  
Shape and Cutting Style **ROUND BRILLIANT**  
Measurements **8.70 - 8.75 X 5.46 MM**  
**GRADING RESULTS**  
Carat Weight **2.53 CARATS**  
Color Grade **F**  
Clarity Grade **VVS 2**  
Cut Grade **EXCELLENT**

June 1, 2026  
IGI Report Number **LG800614280**  
Description **LABORATORY GROWN DIAMOND**  
Shape and Cutting Style **ROUND BRILLIANT**  
Measurements **8.70 - 8.75 X 5.46 MM**

**GRADING RESULTS**

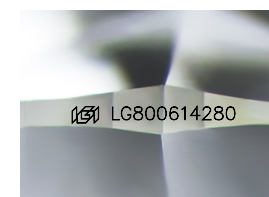
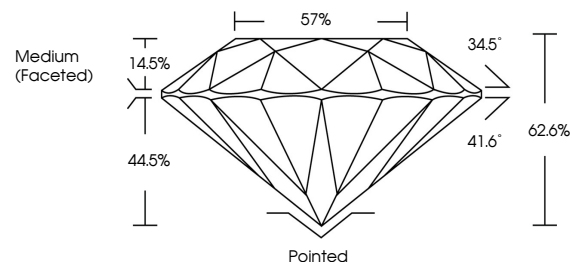
Carat Weight **2.53 CARATS**  
Color Grade **F**  
Clarity Grade **VVS 2**  
Cut Grade **EXCELLENT**

**ADDITIONAL GRADING INFORMATION**

Polish **EXCELLENT**  
Symmetry **EXCELLENT**  
Fluorescence **NONE**  
Inscription(s) **IGI LG800614280**

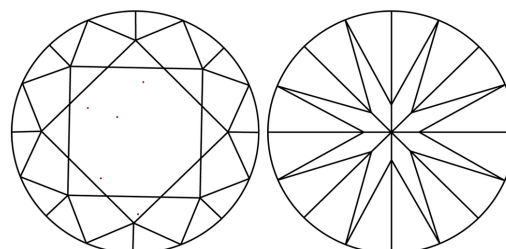
Comments: This Laboratory Grown Diamond was created by Chemical Vapor Deposition (CVD) growth process.  
Type IIa

**PROPORTIONS**



Sample Image Used

**CLARITY CHARACTERISTICS**



**KEY TO SYMBOLS**

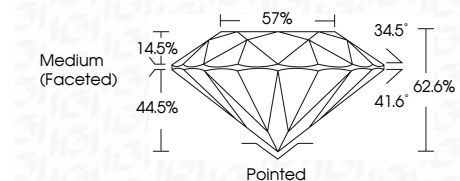
Red symbols indicate internal characteristics.  
Green symbols indicate external characteristics.

**COLOR**

D E F G H I J Faint Very Light Light

**CLARITY**

FL	IF	VVS <sup>1-2</sup>	VS <sup>1-2</sup>	SI <sup>1-2</sup>	I <sup>1-3</sup>
Flawless	Internally Flawless	Very Very Slightly Included	Very Slightly Included	Slightly Included	Included



**ADDITIONAL GRADING INFORMATION**

Polish **EXCELLENT**  
Symmetry **EXCELLENT**  
Fluorescence **NONE**  
Inscription(s) **IGI LG800614280**  
Comments: This Laboratory Grown Diamond was created by Chemical Vapor Deposition (CVD) growth process.  
Type IIa



June 1, 2026  
IGI Report No LG800614280  
ROUND BRILLIANT  
8.70 - 8.75 X 5.46 MM  
2.53 CARATS  
F  
VVS 2  
EXCELLENT  
62.6%  
57%  
Medium (Faceted)  
Pointed  
EXCELLENT  
EXCELLENT  
NONE  
IGI LG800614280  
Comments: This Laboratory Grown Diamond was created by Chemical Vapor Deposition (CVD) growth process.  
Type IIa