



ELECTRONIC COPY

LG800614255
Report verification at igi.org



June 2, 2026

IGI Report Number **LG800614255**

Description **LABORATORY GROWN DIAMOND**

Shape and Cutting Style **PRINCESS CUT**

Measurements **6.18 X 6.12 X 4.52 MM**

GRADING RESULTS

Carat Weight **1.52 CARAT**

Color Grade **E**

Clarity Grade **VS 1**

June 2, 2026
IGI Report Number **LG800614255**
Description **LABORATORY GROWN DIAMOND**
Shape and Cutting Style **PRINCESS CUT**
Measurements **6.18 X 6.12 X 4.52 MM**

GRADING RESULTS

Carat Weight **1.52 CARAT**

Color Grade **E**

Clarity Grade **VS 1**

ADDITIONAL GRADING INFORMATION

Polish **EXCELLENT**

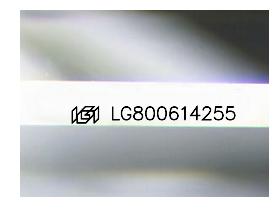
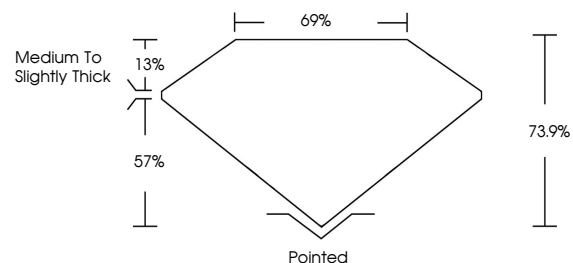
Symmetry **EXCELLENT**

Fluorescence **NONE**

Inscription(s) **IGI LG800614255**

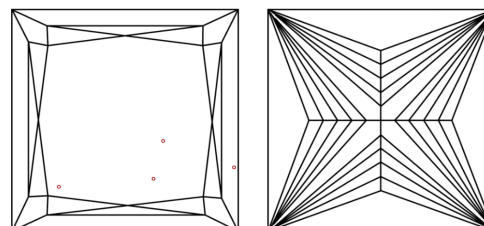
Comments: This Laboratory Grown Diamond was created by Chemical Vapor Deposition (CVD) growth process.
Type IIa

PROPORTIONS



Sample Image Used

CLARITY CHARACTERISTICS



KEY TO SYMBOLS

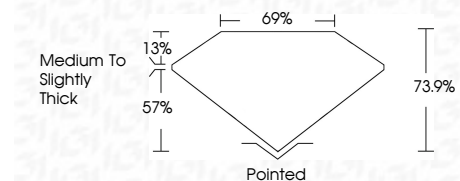
Red symbols indicate internal characteristics.
Green symbols indicate external characteristics.

COLOR

D E F G H I J Faint Very Light Light

CLARITY

FL	IF	VS ¹⁻²	VS ¹⁻²	SI ¹⁻²	I ¹⁻³
Flawless	Internally Flawless	Very Very Slightly Included	Very Slightly Included	Slightly Included	Included



ADDITIONAL GRADING INFORMATION

Polish **EXCELLENT**

Symmetry **EXCELLENT**

Fluorescence **NONE**

Inscription(s) **IGI LG800614255**

Comments: This Laboratory Grown Diamond was created by Chemical Vapor Deposition (CVD) growth process.
Type IIa



IGI



June 2, 2026
IGI Report No. **LG800614255**
PRINCESS CUT
6.18 X 6.12 X 4.52 MM
Carat Weight **1.52 CARAT**
Color Grade **E**
Clarity Grade **VS 1**
Table **73.9%**
Girdle **6%**
Medium to Slightly Thick
Culet **Pointed**
Polish **EXCELLENT**
Symmetry **EXCELLENT**
Fluorescence **NONE**
Inscription(s) **IGI LG800614255**

Comments: This Laboratory Grown Diamond was created by Chemical Vapor Deposition (CVD) growth process.
Type IIa