



**ELECTRONIC COPY**

LG800613073  
Report verification at igi.org



May 20, 2026  
IGI Report Number **LG800613073**  
Description **LABORATORY GROWN DIAMOND**  
Shape and Cutting Style **MODIFIED HEXAGONAL MIXED CUT**  
Measurements **17.24 X 8.50 X 5.57 MM**  
**GRADING RESULTS**  
Carat Weight **5.53 CARATS**  
Color Grade **F**  
Clarity Grade **VS 1**

May 20, 2026  
IGI Report Number **LG800613073**  
Description **LABORATORY GROWN DIAMOND**  
Shape and Cutting Style **MODIFIED HEXAGONAL MIXED CUT**  
Measurements **17.24 X 8.50 X 5.57 MM**

**GRADING RESULTS**

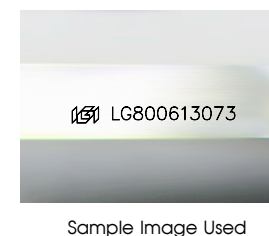
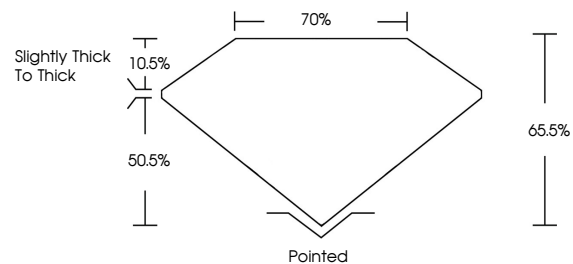
Carat Weight **5.53 CARATS**  
Color Grade **F**  
Clarity Grade **VS 1**

**ADDITIONAL GRADING INFORMATION**

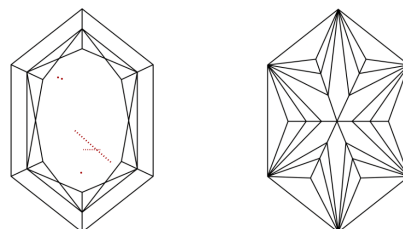
Polish **EXCELLENT**  
Symmetry **EXCELLENT**  
Fluorescence **NONE**  
Inscription(s) **IGI LG800613073**

Comments: This Laboratory Grown Diamond was created by Chemical Vapor Deposition (CVD) growth process.  
Type IIa

**PROPORTIONS**



**CLARITY CHARACTERISTICS**



**KEY TO SYMBOLS**

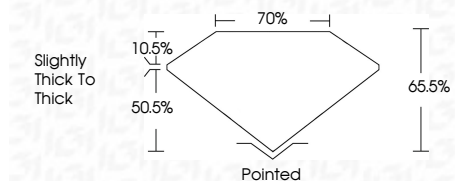
Red symbols indicate internal characteristics.  
Green symbols indicate external characteristics.

**COLOR**

D E F G H I J Faint Very Light Light

**CLARITY**

FL	IF	VS <sup>1-2</sup>	VS <sup>1-2</sup>	SI <sup>1-2</sup>	I <sup>1-3</sup>
Flawless	Internally Flawless	Very Very Slightly Included	Very Slightly Included	Slightly Included	Included



**ADDITIONAL GRADING INFORMATION**

Polish **EXCELLENT**  
Symmetry **EXCELLENT**  
Fluorescence **NONE**  
Inscription(s) **IGI LG800613073**  
Comments: This Laboratory Grown Diamond was created by Chemical Vapor Deposition (CVD) growth process.  
Type IIa



May 20, 2026  
IGI Report No LG800613073  
MODIFIED HEXAGONAL MIXED CUT  
17.24 X 8.50 X 5.57 MM  
5.53 CARATS  
F  
VS 1  
65.5%  
70%  
Slightly thick to thick  
Pointed  
EXCELLENT  
EXCELLENT  
NONE  
IGI LG800613073  
Comments: This Laboratory Grown Diamond was created by Chemical Vapor Deposition (CVD) growth process.  
Type IIa