



ELECTRONIC COPY

LG800611710
Report verification at igi.org



May 18, 2026

IGI Report Number **LG800611710**

Description **LABORATORY GROWN DIAMOND**

Shape and Cutting Style **ROUND BRILLIANT**

Measurements **6.91 - 6.93 X 4.15 MM**

GRADING RESULTS

Carat Weight **1.21 CARAT**

Color Grade **FANCY VIVID BROWNISH ORANGE**

Clarity Grade **VS 2**

Cut Grade **VERY GOOD**

May 18, 2026
IGI Report Number **LG800611710**
Description **LABORATORY GROWN DIAMOND**
Shape and Cutting Style **ROUND BRILLIANT**
Measurements **6.91 - 6.93 X 4.15 MM**

GRADING RESULTS

Carat Weight **1.21 CARAT**

Color Grade **FANCY VIVID BROWNISH ORANGE**

Clarity Grade **VS 2**

Cut Grade **VERY GOOD**

ADDITIONAL GRADING INFORMATION

Polish **GOOD**

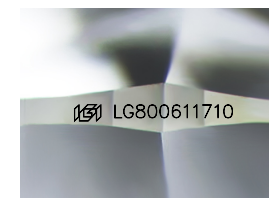
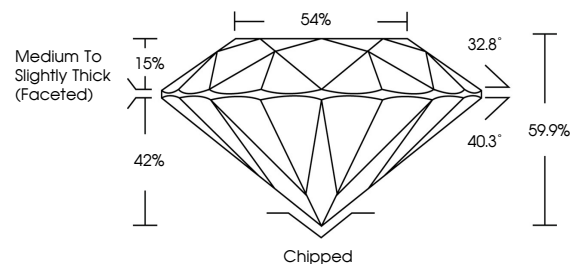
Symmetry **EXCELLENT**

Fluorescence **NONE**

Inscription(s) **IGI LG800611710**

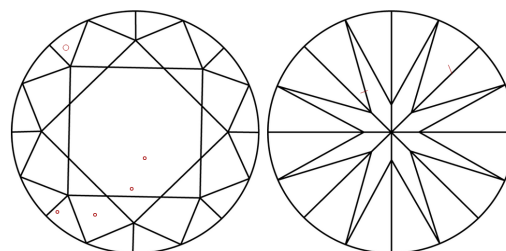
Comments: This Laboratory Grown Diamond was created by Chemical Vapor Deposition (CVD) growth process.
Indications of post-growth treatment.

PROPORTIONS



Sample Image Used

CLARITY CHARACTERISTICS



KEY TO SYMBOLS

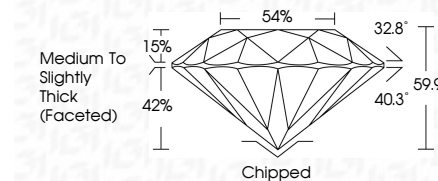
Red symbols indicate internal characteristics.
Green symbols indicate external characteristics.

COLOR

D E F G H I J Faint Very Light Light

CLARITY

FL	IF	VS ¹⁻²	VS ¹⁻²	SI ¹⁻²	I ¹⁻³
Flawless	Internally Flawless	Very Very Slightly Included	Very Slightly Included	Slightly Included	Included



ADDITIONAL GRADING INFORMATION

Polish **GOOD**

Symmetry **EXCELLENT**

Fluorescence **NONE**

Inscription(s) **IGI LG800611710**

Comments: This Laboratory Grown Diamond was created by Chemical Vapor Deposition (CVD) growth process.
Indications of post-growth treatment.



IGI



May 18, 2026
IGI Report No LG800611710
ROUND BRILLIANT
6.91 - 6.93 X 4.15 MM
1.21 CARAT
FANCY VIVID BROWNISH ORANGE
Color Grade
Clarity Grade VS 2
Cut Grade VERY GOOD
Depth 59.9%
Table 54%
Girdle Medium To Slightly Thick (Faceted)
Culet Chipped
Polish GOOD
Symmetry EXCELLENT
Fluorescence NONE
Inscription(s) IGI LG800611710
Comments: This Laboratory Grown Diamond was created by Chemical Vapor Deposition (CVD) growth process.
Indications of post-growth treatment.