



**ELECTRONIC COPY**

LG800605257  
Report verification at igi.org



May 13, 2026

IGI Report Number **LG800605257**  
Description **LABORATORY GROWN DIAMOND**  
Shape and Cutting Style **CUSHION MODIFIED BRILLIANT**

Measurements **12.37 X 8.98 X 6.03 MM**

**GRADING RESULTS**

Carat Weight **6.04 CARATS**  
Color Grade **FANCY VIVID YELLOW**  
Clarity Grade **VS 1**

May 13, 2026  
IGI Report Number **LG800605257**  
Description **LABORATORY GROWN DIAMOND**  
Shape and Cutting Style **CUSHION MODIFIED BRILLIANT**  
Measurements **12.37 X 8.98 X 6.03 MM**

**GRADING RESULTS**

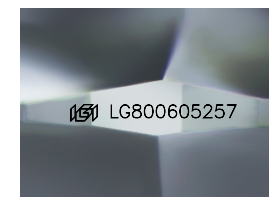
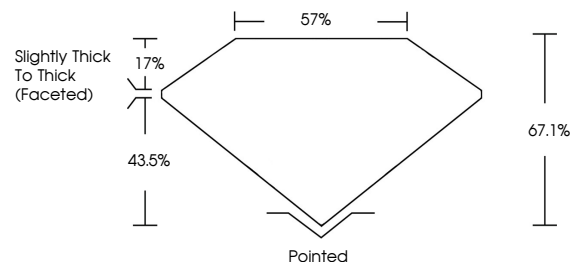
Carat Weight **6.04 CARATS**  
Color Grade **FANCY VIVID YELLOW**  
Clarity Grade **VS 1**

**ADDITIONAL GRADING INFORMATION**

Polish **EXCELLENT**  
Symmetry **EXCELLENT**  
Fluorescence **NONE**  
Inscription(s) **IGI LG800605257**

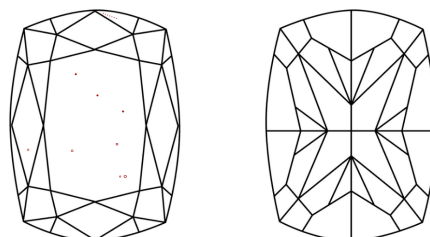
Comments: This Laboratory Grown Diamond was created by Chemical Vapor Deposition (CVD) growth process.

**PROPORTIONS**



Sample Image Used

**CLARITY CHARACTERISTICS**



**KEY TO SYMBOLS**

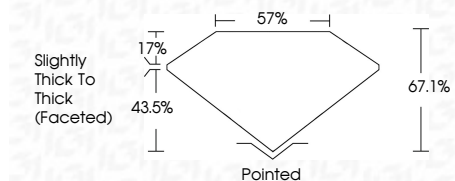
Red symbols indicate internal characteristics.  
Green symbols indicate external characteristics.

**COLOR**

D E F G H I J Faint Very Light Light

**CLARITY**

FL	IF	VS <sup>1-2</sup>	VS <sup>1-2</sup>	SI <sup>1-2</sup>	I <sup>1-3</sup>
Flawless	Internally Flawless	Very Very Slightly Included	Very Slightly Included	Slightly Included	Included



**ADDITIONAL GRADING INFORMATION**

Polish **EXCELLENT**  
Symmetry **EXCELLENT**  
Fluorescence **NONE**  
Inscription(s) **IGI LG800605257**  
Comments: This Laboratory Grown Diamond was created by Chemical Vapor Deposition (CVD) growth process.



**IGI**



May 13, 2026  
IGI Report No LG800605257  
CUSHION MODIFIED BRILLIANT

6.04 CARATS  
Carat Weight  
FANCY VIVID YELLOW  
Color Grade  
VS 1  
Clarity Grade  
67.1%  
Depth  
57%  
Table  
Slightly Thick To Thick (Faceted)  
Girdle  
Pointed  
Culet  
EXCELLENT  
Polish  
EXCELLENT  
Symmetry  
NONE  
Fluorescence  
None  
Inscription(s)  
IGI LG800605257

Comments: This Laboratory Grown Diamond was created by Chemical Vapor Deposition (CVD) growth process.