



ELECTRONIC COPY

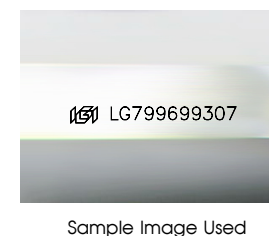
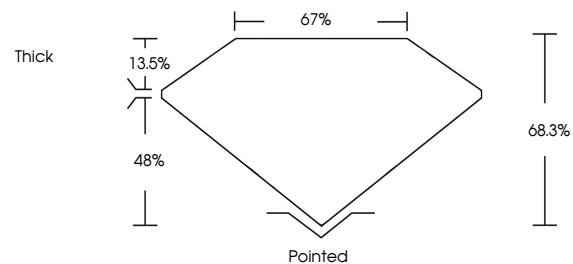
LG799699307
Report verification at igi.org



May 9, 2026
IGI Report Number **LG799699307**
Description **LABORATORY GROWN DIAMOND**
Shape and Cutting Style **CUT CORNERED
RECTANGULAR MODIFIED
BRILLIANT**
Measurements **11.01 X 8.35 X 5.70 MM**
GRADING RESULTS
Carat Weight **5.23 CARATS**
Color Grade **FANCY VIVID YELLOW**
Clarity Grade **VS 1**

May 9, 2026
IGI Report Number **LG799699307**
Description **LABORATORY GROWN DIAMOND**
Shape and Cutting Style **CUT CORNERED RECTANGULAR
MODIFIED BRILLIANT**
Measurements **11.01 X 8.35 X 5.70 MM**

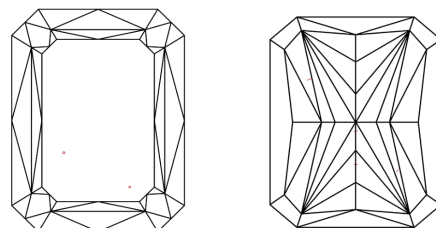
PROPORTIONS



GRADING RESULTS

Carat Weight **5.23 CARATS**
Color Grade **FANCY VIVID YELLOW**
Clarity Grade **VS 1**

CLARITY CHARACTERISTICS



ADDITIONAL GRADING INFORMATION

Polish **EXCELLENT**
Symmetry **EXCELLENT**
Fluorescence **NONE**
Inscription(s) **IGI LG799699307**

Comments: This Laboratory Grown Diamond was created by Chemical Vapor Deposition (CVD) growth process.

KEY TO SYMBOLS

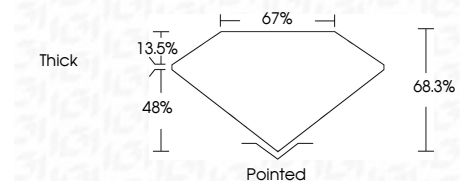
Red symbols indicate internal characteristics.
Green symbols indicate external characteristics.

COLOR

D E F G H I J Faint Very Light Light

CLARITY

| FL | IF | VS ¹⁻² | VS ¹⁻² | SI ¹⁻² | I ¹⁻³ |
|----------|---------------------|-----------------------------|------------------------|-------------------|------------------|
| Flawless | Internally Flawless | Very Very Slightly Included | Very Slightly Included | Slightly Included | Included |



ADDITIONAL GRADING INFORMATION

Polish **EXCELLENT**
Symmetry **EXCELLENT**
Fluorescence **NONE**
Inscription(s) **IGI LG799699307**
Comments: This Laboratory Grown Diamond was created by Chemical Vapor Deposition (CVD) growth process.



May 9, 2026
IGI Report No **LG799699307**
CUT CORNERED RECT. MODIFIED BRILLIANT
11.01 X 8.35 X 5.70 MM
Carat Weight **5.23 CARATS**
Color Grade **FANCY VIVID YELLOW**
Clarity Grade **VS 1**
Depth **68.3%**
Table **67%**
Girdle **Thick**
Culet **Pointed**
Polish **EXCELLENT**
Symmetry **EXCELLENT**
Fluorescence **NONE**
Inscription(s) **IGI LG799699307**
Comments: This Laboratory Grown Diamond was created by Chemical Vapor Deposition (CVD) growth process.