



ELECTRONIC COPY

LG799699302
Report verification at igi.org



May 11, 2026

IGI Report Number **LG799699302**

Description **LABORATORY GROWN DIAMOND**

Shape and Cutting Style **ROUND BRILLIANT**

Measurements **7.33 - 7.37 X 4.55 MM**

GRADING RESULTS

Carat Weight **1.51 CARAT**

Color Grade **FANCY INTENSE PINK**

Clarity Grade **VS 1**

Cut Grade **IDEAL**

May 11, 2026
IGI Report Number **LG799699302**
Description **LABORATORY GROWN DIAMOND**
Shape and Cutting Style **ROUND BRILLIANT**
Measurements **7.33 - 7.37 X 4.55 MM**

GRADING RESULTS

Carat Weight **1.51 CARAT**

Color Grade **FANCY INTENSE PINK**

Clarity Grade **VS 1**

Cut Grade **IDEAL**

ADDITIONAL GRADING INFORMATION

Polish **EXCELLENT**

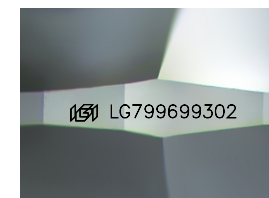
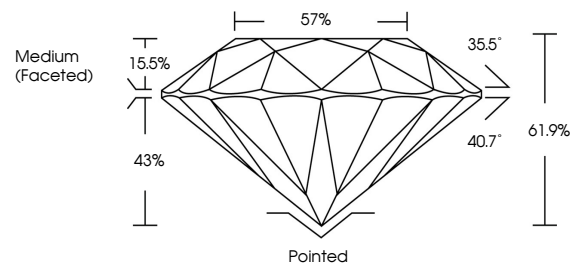
Symmetry **EXCELLENT**

Fluorescence **SLIGHT**

Inscription(s) **LG799699302**

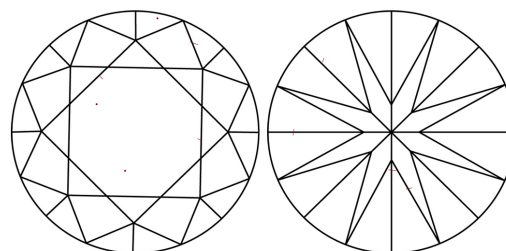
Comments: This Laboratory Grown Diamond was created by Chemical Vapor Deposition (CVD) growth process.
Indications of post-growth treatment.

PROPORTIONS



Sample Image Used

CLARITY CHARACTERISTICS



KEY TO SYMBOLS

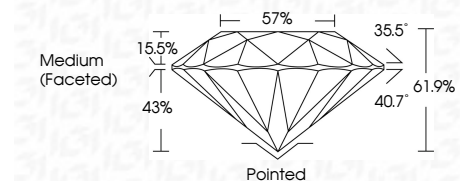
Red symbols indicate internal characteristics.
Green symbols indicate external characteristics.

COLOR

D E F G H I J Faint Very Light Light

CLARITY

FL	IF	VS ¹⁻²	VS ¹⁻²	SI ¹⁻²	I ¹⁻³
Flawless	Internally Flawless	Very Very Slightly Included	Very Slightly Included	Slightly Included	Included



ADDITIONAL GRADING INFORMATION

Polish **EXCELLENT**

Symmetry **EXCELLENT**

Fluorescence **SLIGHT**

Inscription(s) **LG799699302**

Comments: This Laboratory Grown Diamond was created by Chemical Vapor Deposition (CVD) growth process.
Indications of post-growth treatment.



May 11, 2026
IGI Report No LG799699302
ROUND BRILLIANT

1.51 CARAT
FANCY INTENSE PINK
VS 1
IDEAL
61.9%
57%
Medium (Faceted)

Pointed
EXCELLENT
EXCELLENT
SLIGHT
SLIGHT
IGI LG799699302

Comments: This Laboratory Grown Diamond was created by Chemical Vapor Deposition (CVD) growth process.
Indications of post-growth treatment.

