



ELECTRONIC COPY

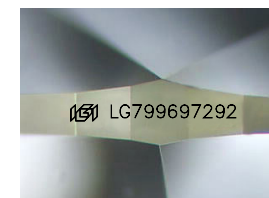
LG799697292
Report verification at igi.org



May 13, 2026
IGI Report Number **LG799697292**
Description **LABORATORY GROWN DIAMOND**

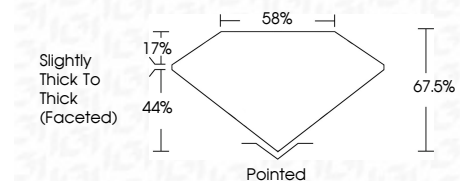
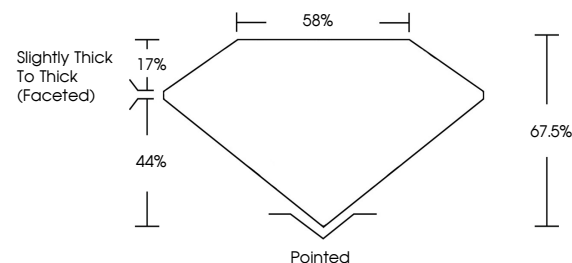
Shape and Cutting Style **PEAR MODIFIED BRILLIANT**
Measurements **12.55 X 8.08 X 5.45 MM**

GRADING RESULTS
Carat Weight **4.03 CARATS**
Color Grade **FANCY INTENSE PINK**
Clarity Grade **VS 1**

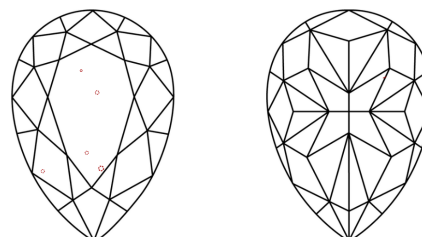


Sample Image Used

PROPORTIONS



CLARITY CHARACTERISTICS



KEY TO SYMBOLS

Red symbols indicate internal characteristics.
Green symbols indicate external characteristics.

COLOR

D E F G H I J Faint Very Light Light

CLARITY

FL	IF	VS ¹⁻²	VS ¹⁻²	SI ¹⁻²	I ¹⁻³
Flawless	Internally Flawless	Very Very Slightly Included	Very Slightly Included	Slightly Included	Included

ADDITIONAL GRADING INFORMATION

Polish **EXCELLENT**
Symmetry **EXCELLENT**
Fluorescence **STRONG**
Inscription(s) **(IGI) LG799697292**

Comments: This Laboratory Grown Diamond was created by Chemical Vapor Deposition (CVD) growth process. Indications of post-growth treatment.



May 13, 2026
IGI Report No LG799697292
PEAR MODIFIED BRILLIANT
12.55 X 8.08 X 5.45 MM
4.03 CARATS
FANCY INTENSE PINK
VS 1
67.5%
85%
Slightly Thick To Thick (Faceted)
Pointed
EXCELLENT
EXCELLENT
STRONG
(IGI) LG799697292
Comments: This Laboratory Grown Diamond was created by Chemical Vapor Deposition (CVD) growth process. Indications of post-growth treatment.