



**ELECTRONIC COPY**

LG799692399  
Report verification at igi.org



May 12, 2026

IGI Report Number **LG799692399**

Description **LABORATORY GROWN DIAMOND**

Shape and Cutting Style **BAGUETTE**

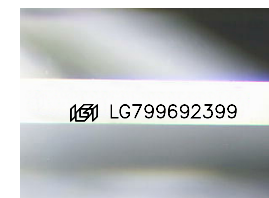
Measurements **8.92 X 4.05 X 2.85 MM**

**GRADING RESULTS**

Carat Weight **1.04 CARAT**

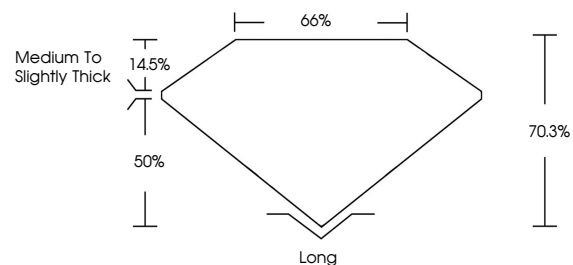
Color Grade **E**

Clarity Grade **VVS 1**

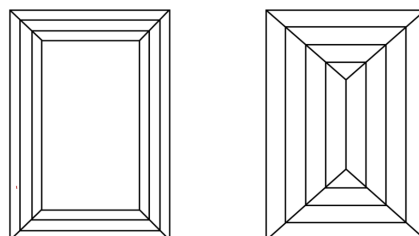


Sample Image Used

**PROPORTIONS**



**CLARITY CHARACTERISTICS**



**KEY TO SYMBOLS**

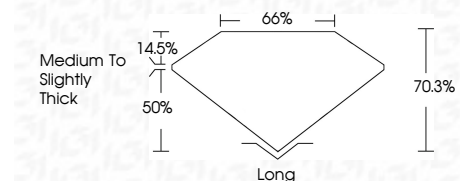
Red symbols indicate internal characteristics.  
Green symbols indicate external characteristics.

**COLOR**

D E F G H I J Faint Very Light Light

**CLARITY**

FL	IF	VVS <sup>1-2</sup>	VS <sup>1-2</sup>	SI <sup>1-2</sup>	I <sup>1-3</sup>
Flawless	Internally Flawless	Very Very Slightly Included	Very Slightly Included	Slightly Included	Included



**ADDITIONAL GRADING INFORMATION**

Polish **EXCELLENT**

Symmetry **EXCELLENT**

Fluorescence **NONE**

Inscription(s) **IGI LG799692399**

Comments: This Laboratory Grown Diamond was created by Chemical Vapor Deposition (CVD) growth process. Type IIa



May 12, 2026  
IGI Report No. LG799692399  
**BAGUETTE**  
8.92 X 4.05 X 2.85 MM  
1.04 CARAT  
E  
VVS 1  
70.3%  
50%  
Medium to Slightly Thick  
Long  
EXCELLENT  
EXCELLENT  
NONE  
IGI LG799692399  
Comments: This Laboratory Grown Diamond was created by Chemical Vapor Deposition (CVD) growth process. Type IIa