



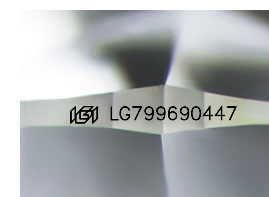
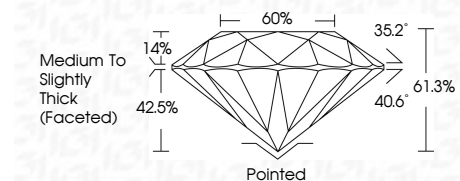
ELECTRONIC COPY

LG799690447
Report verification at igi.org



May 14, 2026
IGI Report Number LG799690447
Description LABORATORY GROWN DIAMOND
Shape and Cutting Style ROUND BRILLIANT
Measurements 10.91 - 10.96 X 6.70 MM

GRADING RESULTS
Carat Weight 5.03 CARATS
Color Grade E
Clarity Grade VS 1
Cut Grade IDEAL



Sample Image Used

ADDITIONAL GRADING INFORMATION
Polish EXCELLENT
Symmetry EXCELLENT
Fluorescence NONE
Inscription(s) IGI LG799690447
Comments: HEARTS & ARROWS
This Laboratory Grown Diamond was created by Chemical Vapor Deposition (CVD) growth process. Type IIa



May 14, 2026
IGI Report No LG799690447
ROUND BRILLIANT
5.03 CARATS E
10.91 - 10.96 X 6.70 MM
Carat Weight
Color Grade VS 1
Clarity Grade IDEAL
Depth 61.3%
Table 66%
Girdle Medium To Slightly Thick (Faceted)
Culet Pointed
Polish EXCELLENT
Symmetry EXCELLENT
Fluorescence NONE
Inscription(s) IGI LG799690447
Comments: HEARTS & ARROWS
This Laboratory Grown Diamond was created by Chemical Vapor Deposition (CVD) growth process. Type IIa

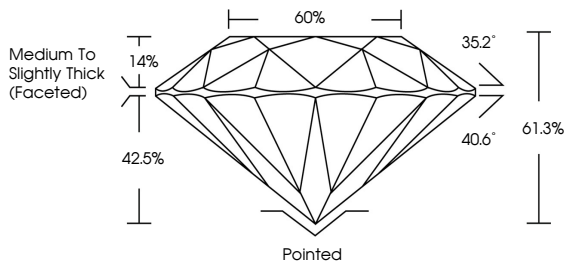
May 14, 2026
IGI Report Number LG799690447
Description LABORATORY GROWN DIAMOND
Shape and Cutting Style ROUND BRILLIANT
Measurements 10.91 - 10.96 X 6.70 MM

GRADING RESULTS
Carat Weight 5.03 CARATS
Color Grade E
Clarity Grade VS 1
Cut Grade IDEAL

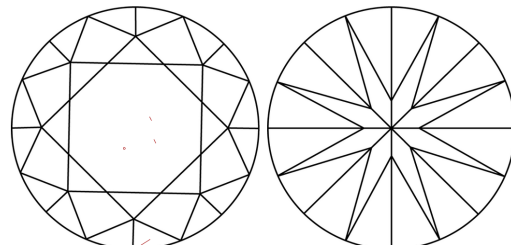
ADDITIONAL GRADING INFORMATION
Polish EXCELLENT
Symmetry EXCELLENT
Fluorescence NONE
Inscription(s) IGI LG799690447

Comments: HEARTS & ARROWS
This Laboratory Grown Diamond was created by Chemical Vapor Deposition (CVD) growth process. Type IIa

PROPORTIONS



CLARITY CHARACTERISTICS



KEY TO SYMBOLS
Red symbols indicate internal characteristics.
Green symbols indicate external characteristics.



Table with columns D, E, F, G, H, I, J, Faint, Very Light, Light

Table with columns FL, IF, VS 1-2, VS 1-2, SI 1-2, I 1-3

