



ELECTRONIC COPY

LG799689905
Report verification at igi.org



May 7, 2026

IGI Report Number **LG799689905**

Description **LABORATORY GROWN DIAMOND**

Shape and Cutting Style **HEART BRILLIANT**

Measurements **6.80 X 7.50 X 4.79 MM**

GRADING RESULTS

Carat Weight **1.50 CARAT**

Color Grade **D**

Clarity Grade **VS 1**

May 7, 2026

IGI Report Number **LG799689905**

Description **LABORATORY GROWN DIAMOND**

Shape and Cutting Style **HEART BRILLIANT**

Measurements **6.80 X 7.50 X 4.79 MM**

GRADING RESULTS

Carat Weight **1.50 CARAT**

Color Grade **D**

Clarity Grade **VS 1**

ADDITIONAL GRADING INFORMATION

Polish **EXCELLENT**

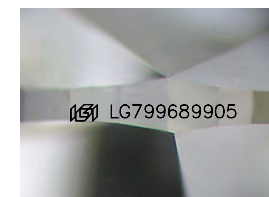
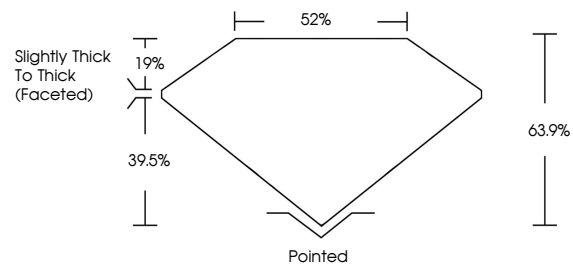
Symmetry **VERY GOOD**

Fluorescence **NONE**

Inscription(s) **IGI LG799689905**

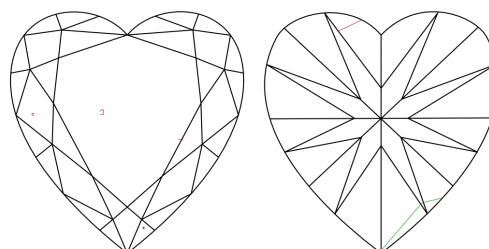
Comments: This Laboratory Grown Diamond was created by Chemical Vapor Deposition (CVD) growth process.
Type IIa

PROPORTIONS



Sample Image Used

CLARITY CHARACTERISTICS



KEY TO SYMBOLS

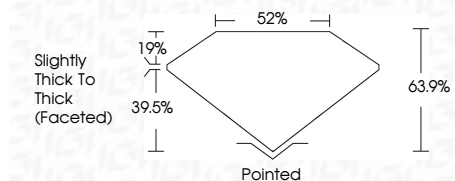
Red symbols indicate internal characteristics.
Green symbols indicate external characteristics.

COLOR

D E F G H I J Faint Very Light Light

CLARITY

FL	IF	VS ¹⁻²	VS ¹⁻²	SI ¹⁻²	I ¹⁻³
Flawless	Internally Flawless	Very Very Slightly Included	Very Slightly Included	Slightly Included	Included



ADDITIONAL GRADING INFORMATION

Polish **EXCELLENT**

Symmetry **VERY GOOD**

Fluorescence **NONE**

Inscription(s) **IGI LG799689905**

Comments: This Laboratory Grown Diamond was created by Chemical Vapor Deposition (CVD) growth process.
Type IIa



May 7, 2026
IGI Report No LG799689905
HEART BRILLIANT
6.80 X 7.50 X 4.79 MM
Carat Weight **1.50 CARAT**
Color Grade **D**
Clarity Grade **VS 1**
Table **63.9%**
Depth **39.5%**
Girdle **Slightly Thick To Thick (Faceted)**
Culet **Pointed**
Polish **EXCELLENT**
Symmetry **VERY GOOD**
Fluorescence **NONE**
Inscription(s) **IGI LG799689905**

Comments: This Laboratory Grown Diamond was created by Chemical Vapor Deposition (CVD) growth process.
Type IIa