



**ELECTRONIC COPY**

LG799689479  
Report verification at igi.org



May 16, 2026

IGI Report Number **LG799689479**

Description **LABORATORY GROWN DIAMOND**

Shape and Cutting Style **PEAR BRILLIANT**

Measurements **16.09 X 9.26 X 5.43 MM**

**GRADING RESULTS**

Carat Weight **4.88 CARATS**

Color Grade **FANCY VIVID BLUE**

Clarity Grade **VS 2**

May 16, 2026  
IGI Report Number **LG799689479**  
Description **LABORATORY GROWN DIAMOND**  
Shape and Cutting Style **PEAR BRILLIANT**  
Measurements **16.09 X 9.26 X 5.43 MM**

**GRADING RESULTS**

Carat Weight **4.88 CARATS**

Color Grade **FANCY VIVID BLUE**

Clarity Grade **VS 2**

**ADDITIONAL GRADING INFORMATION**

Polish **VERY GOOD**

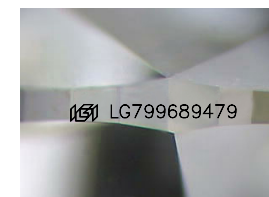
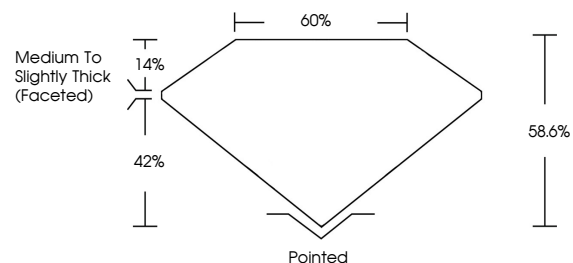
Symmetry **VERY GOOD**

Fluorescence **NONE**

Inscription(s) **IGI LG799689479**

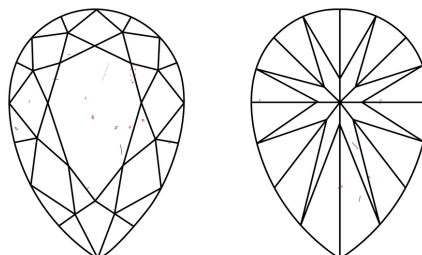
Comments: This Laboratory Grown Diamond was created by Chemical Vapor Deposition (CVD) growth process.  
Indications of post-growth treatment.

**PROPORTIONS**



Sample Image Used

**CLARITY CHARACTERISTICS**



**KEY TO SYMBOLS**

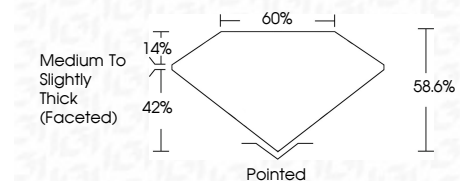
Red symbols indicate internal characteristics.  
Green symbols indicate external characteristics.

**COLOR**

D E F G H I J Faint Very Light Light

**CLARITY**

FL	IF	VS <sup>1-2</sup>	VS <sup>1-2</sup>	SI <sup>1-2</sup>	I <sup>1-3</sup>
Flawless	Internally Flawless	Very Very Slightly Included	Very Slightly Included	Slightly Included	Included



**ADDITIONAL GRADING INFORMATION**

Polish **VERY GOOD**

Symmetry **VERY GOOD**

Fluorescence **NONE**

Inscription(s) **IGI LG799689479**

Comments: This Laboratory Grown Diamond was created by Chemical Vapor Deposition (CVD) growth process.  
Indications of post-growth treatment.



May 16, 2026  
IGI Report No LG799689479  
**PEAR BRILLIANT**

**4.88 CARATS**  
Carat Weight  
**FANCY VIVID BLUE**  
Color Grade

**VS 2**  
Clarity Grade  
**58.6%**  
Depth  
**60%**  
Table  
**Medium to Slightly Thick (Faceted)**  
Girdle

**Pointed**  
Culet  
**VERY GOOD**  
Polish  
**VERY GOOD**  
Symmetry  
**NONE**  
Fluorescence  
Inscription(s)  
IGI LG799689479

Comments: This Laboratory Grown Diamond was created by Chemical Vapor Deposition (CVD) growth process.  
Indications of post-growth treatment.