



ELECTRONIC COPY

LG799689456 Report verification at igi.org



May 14, 2026 IGI Report Number LG799689456 Description LABORATORY GROWN DIAMOND Shape and Cutting Style CUT CORNERED RECTANGULAR MODIFIED BRILLIANT Measurements 7.30 X 5.10 X 3.38 MM GRADING RESULTS Carat Weight 1.11 CARAT Color Grade FANCY VIVID BLUE Clarity Grade VVS 2

LABORATORY GROWN DIAMOND REPORT

May 14, 2026 IGI Report Number LG799689456 Description LABORATORY GROWN DIAMOND Shape and Cutting Style CUT CORNERED RECTANGULAR MODIFIED BRILLIANT Measurements 7.30 X 5.10 X 3.38 MM

GRADING RESULTS

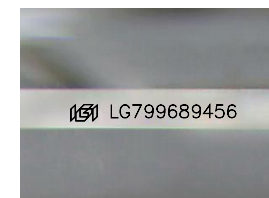
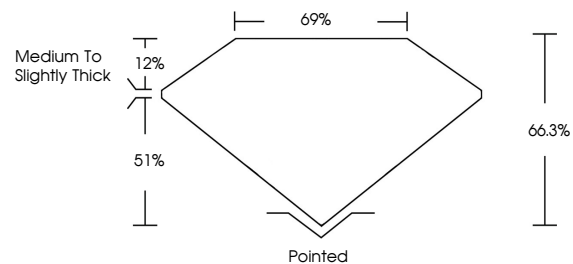
Carat Weight 1.11 CARAT Color Grade FANCY VIVID BLUE Clarity Grade VVS 2

ADDITIONAL GRADING INFORMATION

Polish VERY GOOD Symmetry EXCELLENT Fluorescence NONE Inscription(s) LG799689456

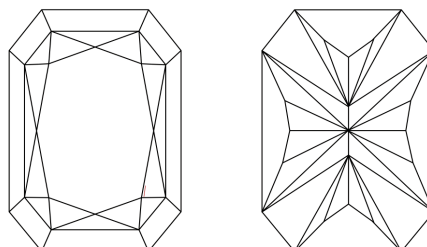
Comments: This Laboratory Grown Diamond was created by Chemical Vapor Deposition (CVD) growth process. Indications of post-growth treatment.

PROPORTIONS



Sample Image Used

CLARITY CHARACTERISTICS



KEY TO SYMBOLS

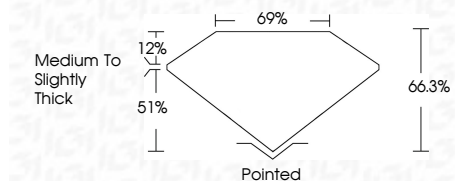
Red symbols indicate internal characteristics. Green symbols indicate external characteristics.

COLOR

D E F G H I J Faint Very Light Light

CLARITY

FL IF VVS 1-2 VS 1-2 SI 1-2 I 1-3 Flawless Internally Flawless Very Very Slightly Included Very Slightly Included Slightly Included Included



ADDITIONAL GRADING INFORMATION

Polish VERY GOOD Symmetry EXCELLENT Fluorescence NONE Inscription(s) LG799689456 Comments: This Laboratory Grown Diamond was created by Chemical Vapor Deposition (CVD) growth process. Indications of post-growth treatment.



IGI



May 14, 2026 IGI Report No LG799689456 CUT CORNERED RECT. MODIFIED BRILLIANT 7.30 X 5.10 X 3.38 MM 1.11 CARAT FANCY VIVID BLUE VVS 2 66.3% 69% Medium to Slightly Thick Pointed VERY GOOD EXCELLENT NONE LG799689456

Comments: This Laboratory Grown Diamond was created by Chemical Vapor Deposition (CVD) growth process. Indications of post-growth treatment.