



ELECTRONIC COPY

LG799687533
Report verification at igi.org



May 11, 2026
IGI Report Number **LG799687533**
Description **LABORATORY GROWN DIAMOND**
Shape and Cutting Style **HEXAGONAL MODIFIED BRILLIANT**
Measurements **16.27 X 7.59 X 5.00 MM**
GRADING RESULTS
Carat Weight **4.02 CARATS**
Color Grade **D**
Clarity Grade **VVS 2**

LABORATORY GROWN DIAMOND REPORT

May 11, 2026
IGI Report Number **LG799687533**
Description **LABORATORY GROWN DIAMOND**
Shape and Cutting Style **HEXAGONAL MODIFIED BRILLIANT**
Measurements **16.27 X 7.59 X 5.00 MM**

GRADING RESULTS

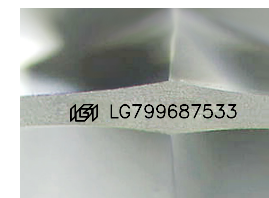
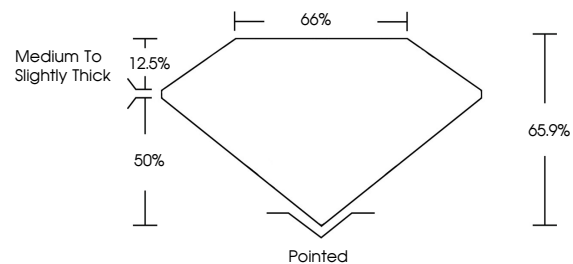
Carat Weight **4.02 CARATS**
Color Grade **D**
Clarity Grade **VVS 2**

ADDITIONAL GRADING INFORMATION

Polish **EXCELLENT**
Symmetry **EXCELLENT**
Fluorescence **NONE**
Inscription(s) **IGI LG799687533**

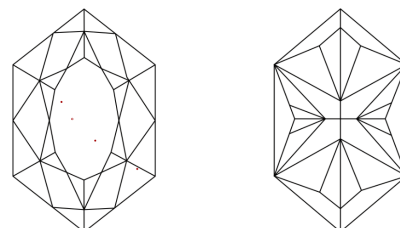
Comments: This Laboratory Grown Diamond was created by Chemical Vapor Deposition (CVD) growth process.
Type IIa

PROPORTIONS



Sample Image Used

CLARITY CHARACTERISTICS



KEY TO SYMBOLS

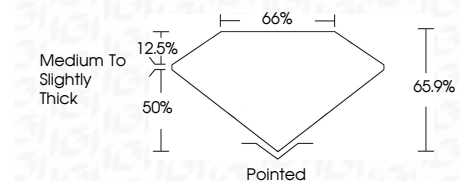
Red symbols indicate internal characteristics.
Green symbols indicate external characteristics.

COLOR

D E F G H I J Faint Very Light Light

CLARITY

FL	IF	VVS ¹⁻²	VS ¹⁻²	SI ¹⁻²	I ¹⁻³
Flawless	Internally Flawless	Very Very Slightly Included	Very Slightly Included	Slightly Included	Included



ADDITIONAL GRADING INFORMATION

Polish **EXCELLENT**
Symmetry **EXCELLENT**
Fluorescence **NONE**
Inscription(s) **IGI LG799687533**
Comments: This Laboratory Grown Diamond was created by Chemical Vapor Deposition (CVD) growth process.
Type IIa



May 11, 2026
IGI Report No LG799687533
HEXAGONAL MODIFIED BRILLIANT
4.02 CARATS
D
Carat Weight
Color Grade
Clarity Grade
Depth
Table
Girdle
Medium to Slightly Thick
Pointed
Polish
Symmetry
Fluorescence
Inscription(s)
EXCELLENT
EXCELLENT
NONE
IGI LG799687533

Comments: This Laboratory Grown Diamond was created by Chemical Vapor Deposition (CVD) growth process.
Type IIa