



ELECTRONIC COPY

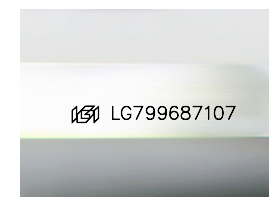
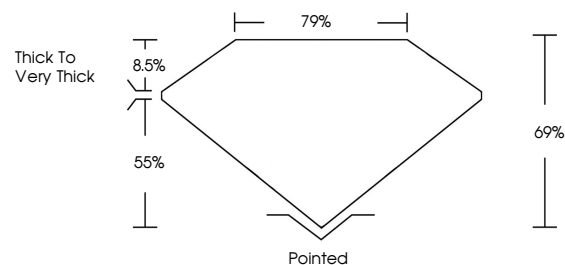
LG799687107
Report verification at igi.org



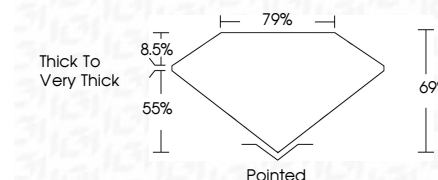
May 13, 2026
IGI Report Number **LG799687107**
Description **LABORATORY GROWN DIAMOND**
Shape and Cutting Style **PRINCESS CUT**
Measurements **5.54 X 5.54 X 3.82 MM**
GRADING RESULTS
Carat Weight **1.04 CARAT**
Color Grade **FANCY INTENSE BROWNISH ORANGE**
Clarity Grade **VVS 2**

May 13, 2026
IGI Report Number **LG799687107**
Description **LABORATORY GROWN DIAMOND**
Shape and Cutting Style **PRINCESS CUT**
Measurements **5.54 X 5.54 X 3.82 MM**
GRADING RESULTS
Carat Weight **1.04 CARAT**
Color Grade **FANCY INTENSE BROWNISH ORANGE**
Clarity Grade **VVS 2**

PROPORTIONS



Sample Image Used



ADDITIONAL GRADING INFORMATION

Polish **EXCELLENT**
Symmetry **EXCELLENT**
Fluorescence **NONE**
Inscription(s) **IGI LG799687107**

Comments: This Laboratory Grown Diamond was created by Chemical Vapor Deposition (CVD) growth process. Indications of post-growth treatment.

COLOR

D E F G H I J Faint Very Light Light

CLARITY

FL	IF	VS ¹⁻²	VS ¹⁻²	SI ¹⁻²	I ¹⁻³
Flawless	Internally Flawless	Very Very Slightly Included	Very Slightly Included	Slightly Included	Included

ADDITIONAL GRADING INFORMATION

Polish **EXCELLENT**
Symmetry **EXCELLENT**
Fluorescence **NONE**
Inscription(s) **IGI LG799687107**
Comments: This Laboratory Grown Diamond was created by Chemical Vapor Deposition (CVD) growth process. Indications of post-growth treatment.



May 13, 2026
IGI Report No **LG799687107**
PRINCESS CUT
1.04 CARAT
Carat Weight
Color Grade **FANCY INTENSE BROWNISH ORANGE**
Clarity Grade **VVS 2**
Depth **69%**
Table **79%**
Girdle **Thick To Very Thick**
Culet **Pointed**
Polish **EXCELLENT**
Symmetry **EXCELLENT**
Fluorescence **NONE**
Inscription(s) **IGI LG799687107**
Comments: This Laboratory Grown Diamond was created by Chemical Vapor Deposition (CVD) growth process. Indications of post-growth treatment.