



ELECTRONIC COPY

LG799684416
Report verification at igi.org



May 12, 2026
IGI Report Number **LG799684416**
Description **LABORATORY GROWN DIAMOND**
Shape and Cutting Style **CUSHION MODIFIED BRILLIANT**
Measurements **10.95 X 7.15 X 4.68 MM**
GRADING RESULTS
Carat Weight **3.02 CARATS**
Color Grade **FANCY VIVID BLUE**
Clarity Grade **SI 1**

LABORATORY GROWN DIAMOND REPORT

May 12, 2026
IGI Report Number **LG799684416**
Description **LABORATORY GROWN DIAMOND**
Shape and Cutting Style **CUSHION MODIFIED BRILLIANT**
Measurements **10.95 X 7.15 X 4.68 MM**

GRADING RESULTS

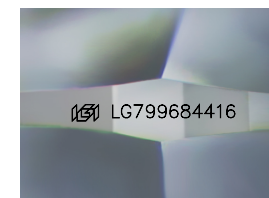
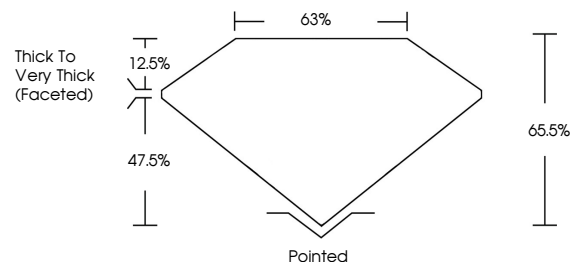
Carat Weight **3.02 CARATS**
Color Grade **FANCY VIVID BLUE**
Clarity Grade **SI 1**

ADDITIONAL GRADING INFORMATION

Polish **EXCELLENT**
Symmetry **EXCELLENT**
Fluorescence **NONE**
Inscription(s) **IGI LG799684416**

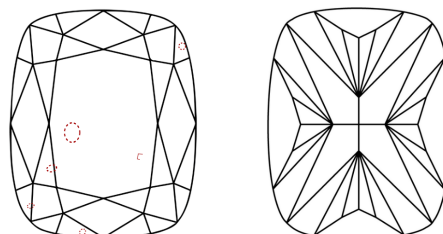
Comments: This Laboratory Grown Diamond was created by Chemical Vapor Deposition (CVD) growth process.
Indications of post-growth treatment.

PROPORTIONS



Sample Image Used

CLARITY CHARACTERISTICS



KEY TO SYMBOLS

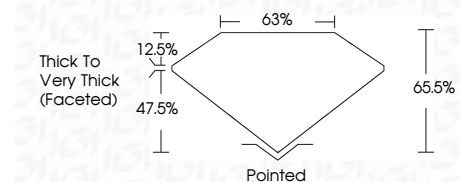
Red symbols indicate internal characteristics.
Green symbols indicate external characteristics.

COLOR

D E F G H I J Faint Very Light Light

CLARITY

FL	IF	VS ¹⁻²	VS ¹⁻²	SI ¹⁻²	I ¹⁻³
Flawless	Internally Flawless	Very Very Slightly Included	Very Slightly Included	Slightly Included	Included



ADDITIONAL GRADING INFORMATION

Polish **EXCELLENT**
Symmetry **EXCELLENT**
Fluorescence **NONE**
Inscription(s) **IGI LG799684416**
Comments: This Laboratory Grown Diamond was created by Chemical Vapor Deposition (CVD) growth process.
Indications of post-growth treatment.



May 12, 2026
IGI Report No **LG799684416**
CUSHION MODIFIED BRILLIANT
3.02 CARATS
Carat Weight
Color Grade **FANCY VIVID BLUE**
Clarity Grade **SI 1**
Depth **65.5%**
Table **63%**
Girdle
Thick to Very Thick (Faceted)
Culet **Pointed**
Polish **EXCELLENT**
Symmetry **EXCELLENT**
Fluorescence **NONE**
Inscription(s) **IGI LG799684416**

Comments: This Laboratory Grown Diamond was created by Chemical Vapor Deposition (CVD) growth process.
Indications of post-growth treatment.