



LABORATORY GROWN DIAMOND REPORT

May 29, 2026
 IGI Report Number **LG799684398**
 Description **LABORATORY GROWN DIAMOND**
 Shape and Cutting Style **HEART BRILLIANT**
 Measurements **5.07 X 5.76 X 2.86 MM**

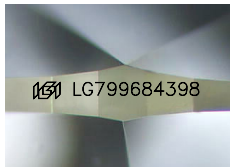
GRADING RESULTS

Carat Weight **0.50 CARAT**
 Color Grade **VERY LIGHT BROWN**
 Clarity Grade **VVS 2**

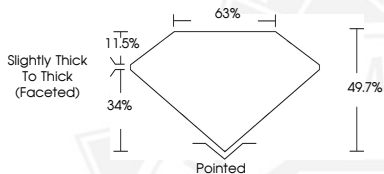
ADDITIONAL GRADING INFORMATION

Polish **VERY GOOD**
 Symmetry **VERY GOOD**
 Fluorescence **SLIGHT**
 Inscription(s) **IGI LG799684398**

Comments: This Laboratory Grown Diamond was created by Chemical Vapor Deposition (CVD) growth process. Indications of post-growth treatment.



Sample Image Used



May 29, 2026
 IGI Report Number **LG799684398**
HEART BRILLIANT
LABORATORY GROWN DIAMOND
5.07 X 5.76 X 2.86 MM
 Carat Weight **0.50 CARAT**
 Color Grade **VERY LIGHT BROWN**
 Clarity Grade **VVS 2**
 Polish **VERY GOOD**
 Symmetry **VERY GOOD**
 Fluorescence **SLIGHT**
 Inscription(s) **IGI LG799684398**

Comments: This Laboratory Grown Diamond was created by Chemical Vapor Deposition (CVD) growth process. Indications of post-growth treatment.



May 29, 2026
 IGI Report Number **LG799684398**
HEART BRILLIANT
LABORATORY GROWN DIAMOND
5.07 X 5.76 X 2.86 MM
 Carat Weight **0.50 CARAT**
 Color Grade **VERY LIGHT BROWN**
 Clarity Grade **VVS 2**
 Polish **VERY GOOD**
 Symmetry **VERY GOOD**
 Fluorescence **SLIGHT**
 Inscription(s) **IGI LG799684398**

Comments: This Laboratory Grown Diamond was created by Chemical Vapor Deposition (CVD) growth process. Indications of post-growth treatment.



THIS DOCUMENT WAS PRODUCED WITH THE FOLLOWING SECURITY MEASURES: SPECIAL DOCUMENT PAPER, INK SCREENS, WATERMARK, BACKGROUND DESIGNS, HOLOGRAM AND OTHER SECURITY FEATURES NOT LISTED AND DO EXCEED DOCUMENT SECURITY INDUSTRY GUIDELINES.