



May 29, 2026

IGI Report Number **LG799684394**

**HEART BRILLIANT
LABORATORY GROWN DIAMOND
5.27 X 5.75 X 2.87 MM**

Carat Weight **0.52 CARAT**
Color Grade **VERY LIGHT BROWN**
Clarity Grade **VS 1**
Polish **VERY GOOD**
Symmetry **VERY GOOD**
Fluorescence **SLIGHT**
Inscription(s) **IGI LG799684394**

Comments: This Laboratory Grown Diamond was created by Chemical Vapor Deposition (CVD) growth process. Indications of post-growth treatment.

LABORATORY GROWN DIAMOND REPORT

May 29, 2026

IGI Report Number

LG799684394

Description

LABORATORY GROWN DIAMOND

Shape and Cutting Style

HEART BRILLIANT

Measurements

5.27 X 5.75 X 2.87 MM

GRADING RESULTS

Carat Weight

0.52 CARAT

Color Grade

VERY LIGHT BROWN

Clarity Grade

VS 1

ADDITIONAL GRADING INFORMATION

Polish

VERY GOOD

Symmetry

VERY GOOD

Fluorescence

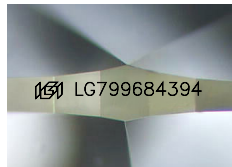
SLIGHT

Inscription(s)

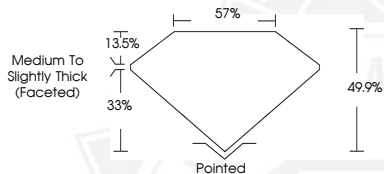
IGI LG799684394

Comments: This Laboratory Grown Diamond was created by Chemical Vapor Deposition (CVD) growth process.

Indications of post-growth treatment.



Sample Image Used



May 29, 2026

IGI Report Number **LG799684394**

**HEART BRILLIANT
LABORATORY GROWN DIAMOND
5.27 X 5.75 X 2.87 MM**

Carat Weight **0.52 CARAT**
Color Grade **VERY LIGHT BROWN**
Clarity Grade **VS 1**
Polish **VERY GOOD**
Symmetry **VERY GOOD**
Fluorescence **SLIGHT**
Inscription(s) **IGI LG799684394**

Comments: This Laboratory Grown Diamond was created by Chemical Vapor Deposition (CVD) growth process. Indications of post-growth treatment.



THIS DOCUMENT WAS PRODUCED WITH THE FOLLOWING SECURITY MEASURES: SPECIAL DOCUMENT PAPER, INK SCREENS, WATERMARK, BACKGROUND DESIGNS, HOLOGRAM AND OTHER SECURITY FEATURES NOT LISTED AND DO EXCEED DOCUMENT SECURITY INDUSTRY GUIDELINES.