



May 22, 2026

IGI Report Number LG799684390

**HEART BRILLIANT
LABORATORY GROWN DIAMOND**

5.56 X 5.73 X 2.74 MM
Carat Weight **0.55 CARAT**
Color Grade **VERY LIGHT BROWN**
Clarity Grade **VS 1**
Polish **VERY GOOD**
Symmetry **VERY GOOD**
Fluorescence **SLIGHT**
Inscription(s) **IGI LG799684390**

Comments: This Laboratory Grown Diamond was created by Chemical Vapor Deposition (CVD) growth process. Indications of post-growth treatment.

LABORATORY GROWN DIAMOND REPORT

May 22, 2026
IGI Report Number **LG799684390**
Description **LABORATORY GROWN DIAMOND**
Shape and Cutting Style **HEART BRILLIANT**
Measurements **5.56 X 5.73 X 2.74 MM**

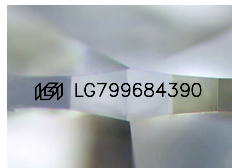
GRADING RESULTS

Carat Weight **0.55 CARAT**
Color Grade **VERY LIGHT BROWN**
Clarity Grade **VS 1**

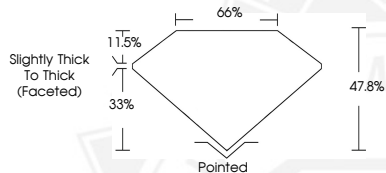
ADDITIONAL GRADING INFORMATION

Polish **VERY GOOD**
Symmetry **VERY GOOD**
Fluorescence **SLIGHT**
Inscription(s) **IGI LG799684390**

Comments: This Laboratory Grown Diamond was created by Chemical Vapor Deposition (CVD) growth process. Indications of post-growth treatment.



Sample Image Used



May 22, 2026

IGI Report Number LG799684390

**HEART BRILLIANT
LABORATORY GROWN DIAMOND**

5.56 X 5.73 X 2.74 MM
Carat Weight **0.55 CARAT**
Color Grade **VERY LIGHT BROWN**
Clarity Grade **VS 1**
Polish **VERY GOOD**
Symmetry **VERY GOOD**
Fluorescence **SLIGHT**
Inscription(s) **IGI LG799684390**

Comments: This Laboratory Grown Diamond was created by Chemical Vapor Deposition (CVD) growth process. Indications of post-growth treatment.



THIS DOCUMENT WAS PRODUCED WITH THE FOLLOWING SECURITY MEASURES: SPECIAL DOCUMENT PAPER, INK SCREENS, WATERMARK, BACKGROUND DESIGNS, HOLOGRAM AND OTHER SECURITY FEATURES NOT LISTED AND DO EXCEED DOCUMENT SECURITY INDUSTRY GUIDELINES.