



ELECTRONIC COPY

LG799684018
Report verification at igi.org



May 11, 2026

IGI Report Number **LG799684018**

Description **LABORATORY GROWN DIAMOND**

Shape and Cutting Style **OLD EUROPEAN CUT**

Measurements **10.99 - 11.03 X 5.96 MM**

GRADING RESULTS

Carat Weight **4.54 CARATS**

Color Grade **E**

Clarity Grade **VVS 2**

May 11, 2026

IGI Report Number **LG799684018**

Description **LABORATORY GROWN DIAMOND**

Shape and Cutting Style **OLD EUROPEAN CUT**

Measurements **10.99 - 11.03 X 5.96 MM**

GRADING RESULTS

Carat Weight **4.54 CARATS**

Color Grade **E**

Clarity Grade **VVS 2**

ADDITIONAL GRADING INFORMATION

Polish **EXCELLENT**

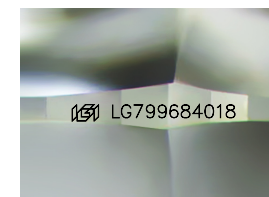
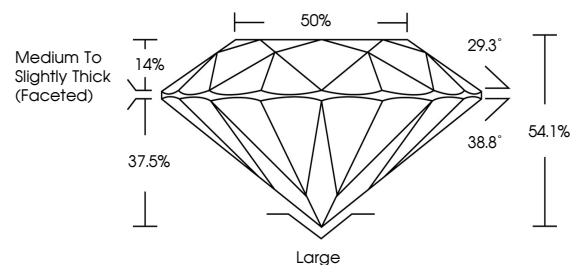
Symmetry **EXCELLENT**

Fluorescence **NONE**

Inscription(s) **IGI LG799684018**

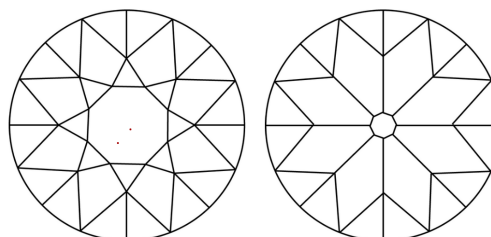
Comments: This Laboratory Grown Diamond was created by Chemical Vapor Deposition (CVD) growth process.
Type IIa

PROPORTIONS



Sample Image Used

CLARITY CHARACTERISTICS



KEY TO SYMBOLS

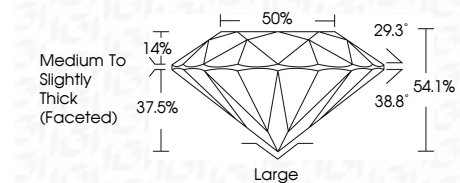
Red symbols indicate internal characteristics.
Green symbols indicate external characteristics.

COLOR

D E F G H I J Faint Very Light Light

CLARITY

FL	IF	VVS ¹⁻²	VS ¹⁻²	SI ¹⁻²	I ¹⁻³
Flawless	Internally Flawless	Very Very Slightly Included	Very Slightly Included	Slightly Included	Included



ADDITIONAL GRADING INFORMATION

Polish **EXCELLENT**

Symmetry **EXCELLENT**

Fluorescence **NONE**

Inscription(s) **IGI LG799684018**

Comments: This Laboratory Grown Diamond was created by Chemical Vapor Deposition (CVD) growth process.
Type IIa



May 11, 2026
IGI Report No LG799684018
OLD EUROPEAN CUT

4.54 CARATS
E

Carat Weight
Color Grade
Clarity Grade
Depth
Table
Girdle

4.54 CARATS
E
VVS 2
54.1%
37.5%

Medium To Slightly Thick (Faceted)

Large
EXCELLENT
EXCELLENT
NONE
IGI LG799684018

Culet
Polish
Symmetry
Fluorescence
Inscription(s)

Comments: This Laboratory Grown Diamond was created by Chemical Vapor Deposition (CVD) growth process.
Type IIa