



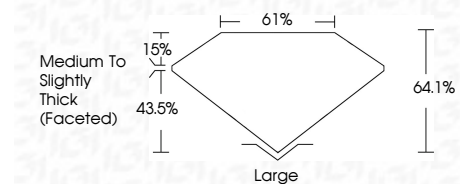
ELECTRONIC COPY

LG799683664 Report verification at igi.org



May 12, 2026 IGI Report Number LG799683664 Description LABORATORY GROWN DIAMOND Shape and Cutting Style CUSHION BRILLIANT Measurements 10.02 X 7.72 X 4.95 MM

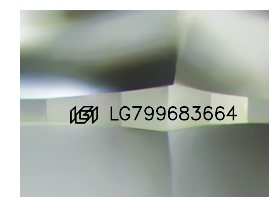
GRADING RESULTS Carat Weight 3.02 CARATS Color Grade F Clarity Grade VVS 2



ADDITIONAL GRADING INFORMATION Polish EXCELLENT Symmetry EXCELLENT Fluorescence NONE Inscription(s) IGI LG799683664 Comments: This Laboratory Grown Diamond was created by Chemical Vapor Deposition (CVD) growth process. Type IIa

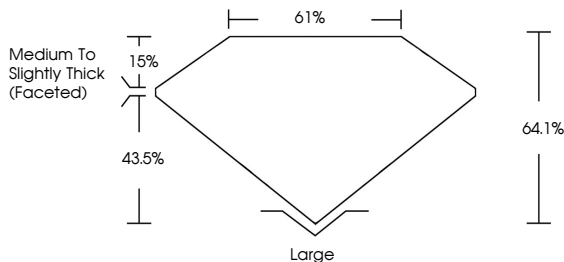


May 12, 2026 IGI Report No LG799683664 CUSHION BRILLIANT 10.02 X 7.72 X 4.95 MM 3.02 CARATS F VS 2 64.1% 61% Medium to Slightly Thick (Faceted) Large EXCELLENT EXCELLENT NONE NONE IGI LG799683664 Comments: This Laboratory Grown Diamond was created by Chemical Vapor Deposition (CVD) growth process. Type IIa

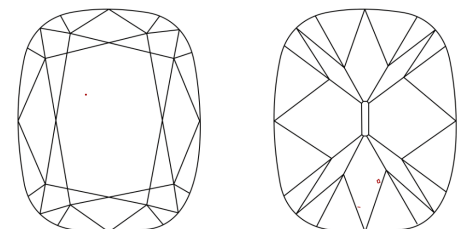


Sample Image Used

PROPORTIONS



CLARITY CHARACTERISTICS



KEY TO SYMBOLS Red symbols indicate internal characteristics. Green symbols indicate external characteristics.

COLOR

Table with color scale: D, E, F, G, H, I, J, Faint, Very Light, Light

CLARITY

Table with clarity scale: FL, IF, VS 1-2, VS 1-2, SI 1-2, I 1-3, Flawless, Internally Flawless, Very Very Slightly Included, Very Slightly Included, Slightly Included, Included



May 12, 2026 IGI Report Number LG799683664 Description LABORATORY GROWN DIAMOND Shape and Cutting Style CUSHION BRILLIANT Measurements 10.02 X 7.72 X 4.95 MM

GRADING RESULTS Carat Weight 3.02 CARATS Color Grade F Clarity Grade VVS 2

ADDITIONAL GRADING INFORMATION Polish EXCELLENT Symmetry EXCELLENT Fluorescence NONE Inscription(s) IGI LG799683664

Comments: This Laboratory Grown Diamond was created by Chemical Vapor Deposition (CVD) growth process. Type IIa