



**ELECTRONIC COPY**

LG799683371  
Report verification at igi.org



May 7, 2026

IGI Report Number **LG799683371**

Description **LABORATORY GROWN DIAMOND**

Shape and Cutting Style **ROUND BRILLIANT**

Measurements **8.14 - 8.16 X 4.96 MM**

**GRADING RESULTS**

Carat Weight **2.04 CARATS**

Color Grade **E**

Clarity Grade **VVS 1**

Cut Grade **IDEAL**

May 7, 2026

IGI Report Number **LG799683371**

Description **LABORATORY GROWN DIAMOND**

Shape and Cutting Style **ROUND BRILLIANT**

Measurements **8.14 - 8.16 X 4.96 MM**

**GRADING RESULTS**

Carat Weight **2.04 CARATS**

Color Grade **E**

Clarity Grade **VVS 1**

Cut Grade **IDEAL**

**ADDITIONAL GRADING INFORMATION**

Polish **EXCELLENT**

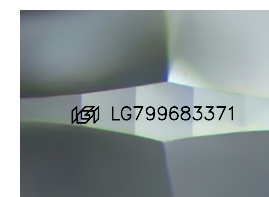
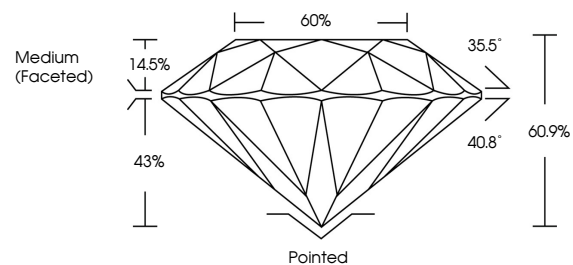
Symmetry **EXCELLENT**

Fluorescence **NONE**

Inscription(s) **LG799683371**

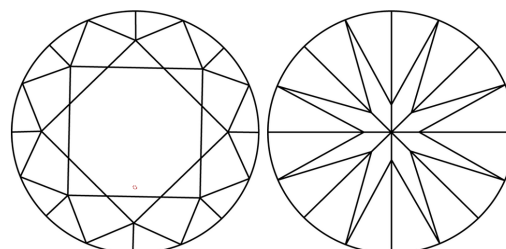
Comments: This Laboratory Grown Diamond was created by Chemical Vapor Deposition (CVD) growth process.  
Type IIa

**PROPORTIONS**



Sample Image Used

**CLARITY CHARACTERISTICS**



**KEY TO SYMBOLS**

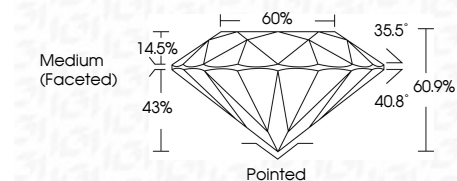
Red symbols indicate internal characteristics.  
Green symbols indicate external characteristics.

**COLOR**

D E F G H I J Faint Very Light Light

**CLARITY**

FL	IF	VVS <sup>1-2</sup>	VS <sup>1-2</sup>	SI <sup>1-2</sup>	I <sup>1-3</sup>
Flawless	Internally Flawless	Very Very Slightly Included	Very Slightly Included	Slightly Included	Included



**ADDITIONAL GRADING INFORMATION**

Polish **EXCELLENT**

Symmetry **EXCELLENT**

Fluorescence **NONE**

Inscription(s) **LG799683371**

Comments: This Laboratory Grown Diamond was created by Chemical Vapor Deposition (CVD) growth process.  
Type IIa



**IGI**



May 7, 2026  
IGI Report No **LG799683371**  
**ROUND BRILLIANT**

**8.14 - 8.16 X 4.96 MM**

**2.04 CARATS**  
E

**VVS 1**  
IDEAL  
60.9%

**Medium (Faceted)**

**Pointed**  
EXCELLENT  
EXCELLENT  
NONE  
NONE

**IGI LG799683371**

Comments: This Laboratory Grown Diamond was created by Chemical Vapor Deposition (CVD) growth process.  
Type IIa