



ELECTRONIC COPY

LG799681320
Report verification at igi.org



May 9, 2026
IGI Report Number: LG799681320
Description: LABORATORY GROWN DIAMOND
Shape and Cutting Style: CUT CORNERED RECTANGULAR MODIFIED BRILLIANT
Measurements: 10.31 X 7.17 X 4.87 MM
GRADING RESULTS
Carat Weight: 3.08 CARATS
Color Grade: E
Clarity Grade: VVS 2

LABORATORY GROWN DIAMOND REPORT

May 9, 2026
IGI Report Number: LG799681320
Description: LABORATORY GROWN DIAMOND
Shape and Cutting Style: CUT CORNERED RECTANGULAR MODIFIED BRILLIANT
Measurements: 10.31 X 7.17 X 4.87 MM

GRADING RESULTS

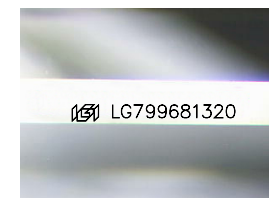
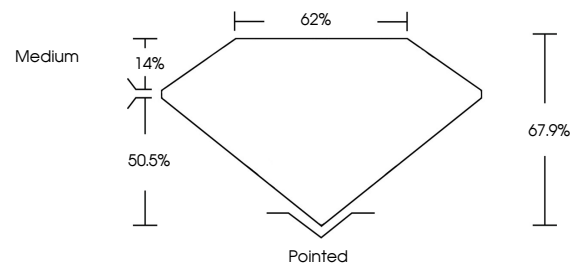
Carat Weight: 3.08 CARATS
Color Grade: E
Clarity Grade: VVS 2

ADDITIONAL GRADING INFORMATION

Polish: EXCELLENT
Symmetry: EXCELLENT
Fluorescence: NONE
Inscription(s): LG799681320

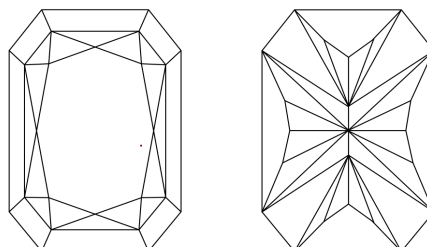
Comments: This Laboratory Grown Diamond was created by Chemical Vapor Deposition (CVD) growth process. Type IIa

PROPORTIONS



Sample Image Used

CLARITY CHARACTERISTICS



KEY TO SYMBOLS

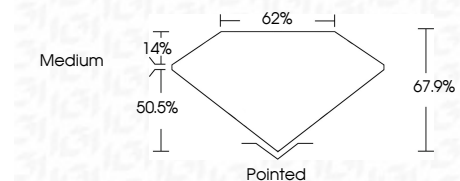
Red symbols indicate internal characteristics. Green symbols indicate external characteristics.

COLOR

D E F G H I J Faint Very Light Light

CLARITY

FL IF VVS 1-2 VS 1-2 SI 1-2 I 1-3
Flawless Internally Flawless Very Very Slightly Included Very Slightly Included Slightly Included Included



ADDITIONAL GRADING INFORMATION

Polish: EXCELLENT
Symmetry: EXCELLENT
Fluorescence: NONE
Inscription(s): LG799681320
Comments: This Laboratory Grown Diamond was created by Chemical Vapor Deposition (CVD) growth process. Type IIa



May 9, 2026
IGI Report No: LG799681320
CUT CORNERED RECT. MODIFIED BRILLIANT
10.31 X 7.17 X 4.87 MM
3.08 CARATS
E
VVS 2
67.9%
62%
Medium
Pointed
EXCELLENT
EXCELLENT
NONE
Inscription(s): LG799681320
Comments: This Laboratory Grown Diamond was created by Chemical Vapor Deposition (CVD) growth process. Type IIa