



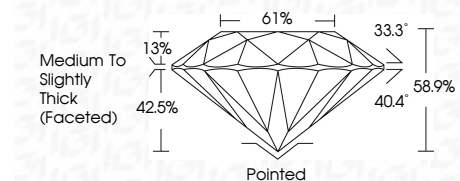
ELECTRONIC COPY

LG799681071 Report verification at igi.org



May 12, 2026 IGI Report Number LG799681071 Description LABORATORY GROWN DIAMOND Shape and Cutting Style ROUND BRILLIANT Measurements 8.85 - 8.90 X 5.23 MM

GRADING RESULTS Carat Weight 2.53 CARATS Color Grade E Clarity Grade VVS 2 Cut Grade EXCELLENT



ADDITIONAL GRADING INFORMATION Polish EXCELLENT Symmetry EXCELLENT Fluorescence NONE Inscription(s) IGI LG799681071 Comments: This Laboratory Grown Diamond was created by Chemical Vapor Deposition (CVD) growth process. Type IIa



May 12, 2026 IGI Report No LG799681071 ROUND BRILLIANT 8.85 - 8.90 X 5.23 MM 2.53 CARATS E VVS 2 EXCELLENT 61% 42.5% 33.3° 40.4° 58.9% Medium To Slightly Thick (Faceted) Pointed EXCELLENT EXCELLENT NONE IGI LG799681071 Comments: This Laboratory Grown Diamond was created by Chemical Vapor Deposition (CVD) growth process. Type IIa

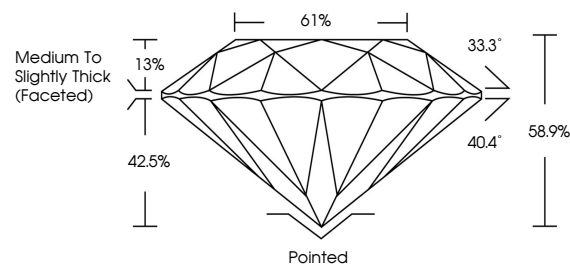
May 12, 2026 IGI Report Number LG799681071 Description LABORATORY GROWN DIAMOND Shape and Cutting Style ROUND BRILLIANT Measurements 8.85 - 8.90 X 5.23 MM

GRADING RESULTS Carat Weight 2.53 CARATS Color Grade E Clarity Grade VVS 2 Cut Grade EXCELLENT

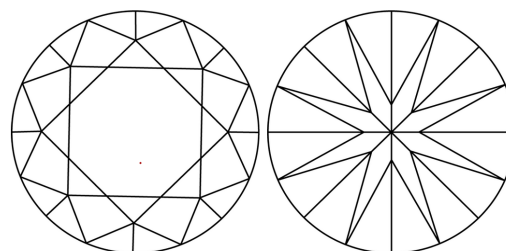
ADDITIONAL GRADING INFORMATION Polish EXCELLENT Symmetry EXCELLENT Fluorescence NONE Inscription(s) IGI LG799681071

Comments: This Laboratory Grown Diamond was created by Chemical Vapor Deposition (CVD) growth process. Type IIa

PROPORTIONS

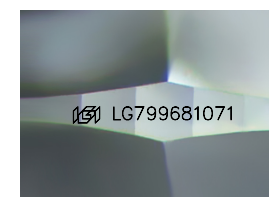


CLARITY CHARACTERISTICS



KEY TO SYMBOLS

Red symbols indicate internal characteristics. Green symbols indicate external characteristics.



Sample Image Used

COLOR

D E F G H I J Faint Very Light Light

CLARITY

FL IF VVS 1-2 VS 1-2 SI 1-2 I 1-3 Flawless Internally Flawless Very Very Slightly Included Very Slightly Included Slightly Included Included

