



ELECTRONIC COPY

LG799678636
Report verification at igi.org



May 15, 2026
IGI Report Number **LG799678636**
Description **LABORATORY GROWN DIAMOND**
Shape and Cutting Style **CUSHION MODIFIED BRILLIANT**
Measurements **6.76 X 4.99 X 3.34 MM**
GRADING RESULTS
Carat Weight **1.01 CARAT**
Color Grade **Q-R**
Clarity Grade **VS 1**

LABORATORY GROWN DIAMOND REPORT

May 15, 2026
IGI Report Number **LG799678636**
Description **LABORATORY GROWN DIAMOND**
Shape and Cutting Style **CUSHION MODIFIED BRILLIANT**
Measurements **6.76 X 4.99 X 3.34 MM**

GRADING RESULTS

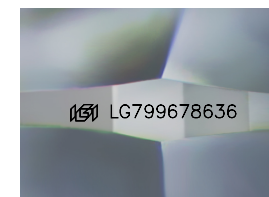
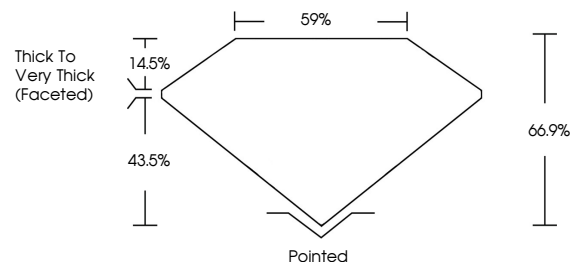
Carat Weight **1.01 CARAT**
Color Grade **Q-R**
Clarity Grade **VS 1**

ADDITIONAL GRADING INFORMATION

Polish **EXCELLENT**
Symmetry **VERY GOOD**
Fluorescence **NONE**
Inscription(s) **IGI LG799678636**

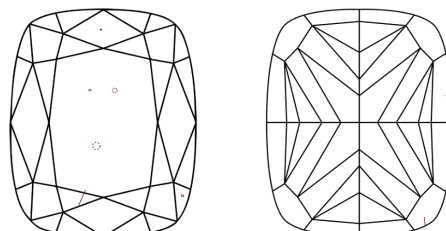
Comments: This Laboratory Grown Diamond was created by Chemical Vapor Deposition (CVD) growth process.
Type IIa

PROPORTIONS



Sample Image Used

CLARITY CHARACTERISTICS



KEY TO SYMBOLS

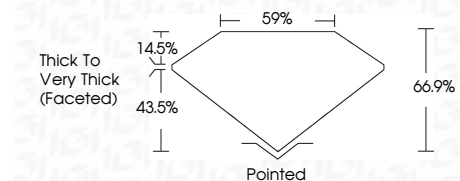
Red symbols indicate internal characteristics.
Green symbols indicate external characteristics.

COLOR

D E F G H I J Faint Very Light Light

CLARITY

FL	IF	VS ¹⁻²	VS ¹⁻²	SI ¹⁻²	I ¹⁻³
Flawless	Internally Flawless	Very Very Slightly Included	Very Slightly Included	Slightly Included	Included



ADDITIONAL GRADING INFORMATION

Polish **EXCELLENT**
Symmetry **VERY GOOD**
Fluorescence **NONE**
Inscription(s) **IGI LG799678636**
Comments: This Laboratory Grown Diamond was created by Chemical Vapor Deposition (CVD) growth process.
Type IIa



May 15, 2026
IGI Report No LG799678636
CUSHION MODIFIED BRILLIANT
6.76 X 4.99 X 3.34 MM
1.01 CARAT
Q-R
VS 1
66.9%
43.5%
14.5%
Thick to Very Thick (Faceted)
Pointed
EXCELLENT
VERY GOOD
NONE
IGI LG799678636
Comments: This Laboratory Grown Diamond was created by Chemical Vapor Deposition (CVD) growth process.
Type IIa