



ELECTRONIC COPY

LG799678610 Report verification at igi.org



May 11, 2026 IGI Report Number LG799678610 Description LABORATORY GROWN DIAMOND Shape and Cutting Style CUSHION MODIFIED BRILLIANT Measurements 9.20 X 6.85 X 4.55 MM GRADING RESULTS Carat Weight 2.58 CARATS Color Grade FANCY INTENSE YELLOW Clarity Grade VS 1

LABORATORY GROWN DIAMOND REPORT

May 11, 2026 IGI Report Number LG799678610 Description LABORATORY GROWN DIAMOND Shape and Cutting Style CUSHION MODIFIED BRILLIANT Measurements 9.20 X 6.85 X 4.55 MM

GRADING RESULTS

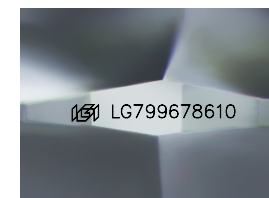
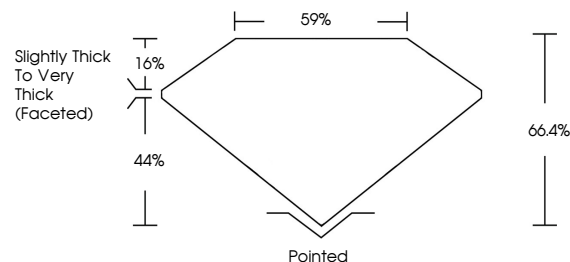
Carat Weight 2.58 CARATS Color Grade FANCY INTENSE YELLOW Clarity Grade VS 1

ADDITIONAL GRADING INFORMATION

Polish EXCELLENT Symmetry EXCELLENT Fluorescence NONE Inscription(s) IGI LG799678610

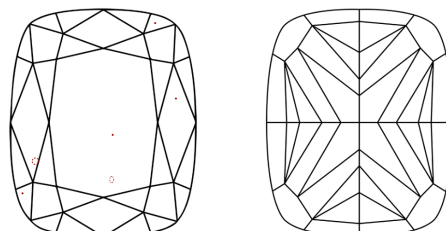
Comments: This Laboratory Grown Diamond was created by Chemical Vapor Deposition (CVD) growth process.

PROPORTIONS



Sample Image Used

CLARITY CHARACTERISTICS



KEY TO SYMBOLS

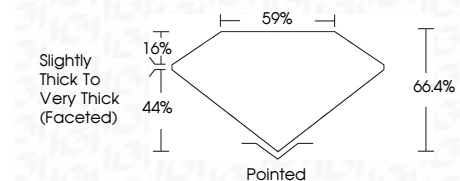
Red symbols indicate internal characteristics. Green symbols indicate external characteristics.

COLOR

D E F G H I J Faint Very Light Light

CLARITY

FL IF VS 1-2 VS 2-3 SI 1-2 I 1-3 Flawless Internally Flawless Very Very Slightly Included Very Slightly Included Slightly Included Included



ADDITIONAL GRADING INFORMATION

Polish EXCELLENT Symmetry EXCELLENT Fluorescence NONE Inscription(s) IGI LG799678610 Comments: This Laboratory Grown Diamond was created by Chemical Vapor Deposition (CVD) growth process.



May 11, 2026 IGI Report No LG799678610 CUSHION MODIFIED BRILLIANT 9.20 X 6.85 X 4.55 MM 2.58 CARATS FANCY INTENSE YELLOW VS 1 66.4% 59% Slightly Thick To Very Thick (Faceted) Pointed EXCELLENT EXCELLENT NONE NONE IGI LG799678610 Comments: This Laboratory Grown Diamond was created by Chemical Vapor Deposition (CVD) growth process.