



ELECTRONIC COPY

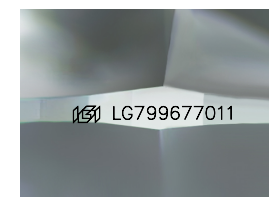
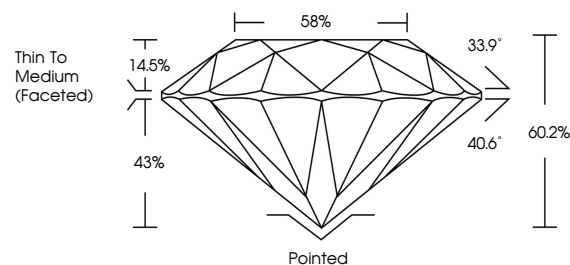
LG799677011
Report verification at igi.org



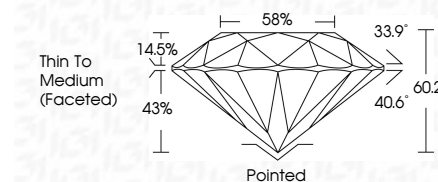
June 26, 2026
IGI Report Number **LG799677011**
Description **LABORATORY GROWN DIAMOND**
Shape and Cutting Style **ROUND BRILLIANT**
Measurements **9.37 - 9.41 X 5.65 MM**
GRADING RESULTS
Carat Weight **3.04 CARATS**
Color Grade **FANCY VIVID GREEN**
Clarity Grade **VVS 1**
Cut Grade **IDEAL**

June 26, 2026
IGI Report Number **LG799677011**
Description **LABORATORY GROWN DIAMOND**
Shape and Cutting Style **ROUND BRILLIANT**
Measurements **9.37 - 9.41 X 5.65 MM**
GRADING RESULTS
Carat Weight **3.04 CARATS**
Color Grade **FANCY VIVID GREEN**
Clarity Grade **VVS 1**
Cut Grade **IDEAL**

PROPORTIONS



Sample Image Used



ADDITIONAL GRADING INFORMATION

Polish **EXCELLENT**
Symmetry **EXCELLENT**
Fluorescence **NONE**
Inscription(s) **IGI LG799677011**

Comments: HEARTS & ARROWS
This Laboratory Grown Diamond was created by High Pressure High Temperature (HPHT) growth process. Indications of post-growth treatment.

ADDITIONAL GRADING INFORMATION

Polish **EXCELLENT**
Symmetry **EXCELLENT**
Fluorescence **NONE**
Inscription(s) **IGI LG799677011**
Comments: HEARTS & ARROWS
This Laboratory Grown Diamond was created by High Pressure High Temperature (HPHT) growth process. Indications of post-growth treatment.

COLOR

D E F G H I J Faint Very Light Light

CLARITY

FL	IF	VVS ¹⁻²	VS ¹⁻²	SI ¹⁻²	I ¹⁻³
Flawless	Internally Flawless	Very Very Slightly Included	Very Slightly Included	Slightly Included	Included



www.igi.org



IGI

June 26, 2026
IGI Report No LG799677011
ROUND BRILLIANT
9.37 - 9.41 X 5.65 MM
3.04 CARATS
FANCY VIVID GREEN
VVS 1
IDEAL
60.2%
58%
Thin To Medium (Faceted)
Pointed
EXCELLENT
EXCELLENT
NONE
IGI LG799677011
Comments: HEARTS & ARROWS
This Laboratory Grown Diamond was created by High Pressure High Temperature (HPHT) growth process. Indications of post-growth treatment.