



**ELECTRONIC COPY**

LG799676975  
Report verification at igi.org



June 18, 2026  
IGI Report Number **LG799676975**  
Description **LABORATORY GROWN DIAMOND**  
Shape and Cutting Style **ROUND BRILLIANT**  
Measurements **7.92 - 8.03 X 4.88 MM**  
**GRADING RESULTS**  
Carat Weight **1.90 CARAT**  
Color Grade **FANCY VIVID GREEN**  
Clarity Grade **INTERNALLY FLAWLESS**  
Cut Grade **IDEAL**

June 18, 2026  
IGI Report Number **LG799676975**  
Description **LABORATORY GROWN DIAMOND**  
Shape and Cutting Style **ROUND BRILLIANT**  
Measurements **7.92 - 8.03 X 4.88 MM**

**GRADING RESULTS**

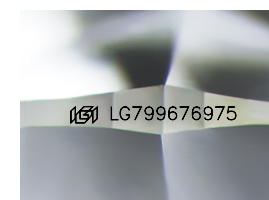
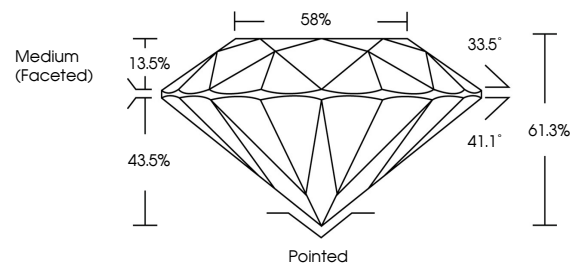
Carat Weight **1.90 CARAT**  
Color Grade **FANCY VIVID GREEN**  
Clarity Grade **INTERNALLY FLAWLESS**  
Cut Grade **IDEAL**

**ADDITIONAL GRADING INFORMATION**

Polish **EXCELLENT**  
Symmetry **EXCELLENT**  
Fluorescence **VERY SLIGHT**  
Inscription(s) **LG799676975**

Comments: HEARTS & ARROWS  
This Laboratory Grown Diamond was created by High Pressure High Temperature (HPHT) growth process. Indications of post-growth treatment.

**PROPORTIONS**



Sample Image Used

**CLARITY CHARACTERISTICS**



**KEY TO SYMBOLS**

Red symbols indicate internal characteristics.  
Green symbols indicate external characteristics.

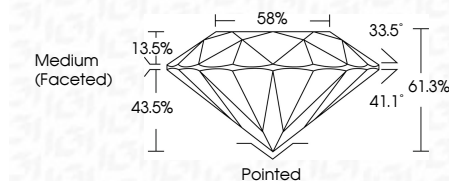


**COLOR**

D E F G H I J Faint Very Light Light

**CLARITY**

FL	IF	VS <sup>1-2</sup>	VS <sup>1-2</sup>	SI <sup>1-2</sup>	I <sup>1-3</sup>
Flawless	Internally Flawless	Very Very Slightly Included	Very Slightly Included	Slightly Included	Included



**ADDITIONAL GRADING INFORMATION**

Polish **EXCELLENT**  
Symmetry **EXCELLENT**  
Fluorescence **VERY SLIGHT**  
Inscription(s) **LG799676975**  
Comments: HEARTS & ARROWS  
This Laboratory Grown Diamond was created by High Pressure High Temperature (HPHT) growth process. Indications of post-growth treatment.



June 18, 2026  
IGI Report No **LG799676975**  
**ROUND BRILLIANT**  
1.90 CARAT  
Color Grade **FANCY VIVID GREEN**  
Clarity Grade **IF**  
Depth **61.3%**  
Table **58%**  
Girdle **Medium (Faceted)**  
Culet **Pointed**  
Polish **EXCELLENT**  
Symmetry **EXCELLENT**  
Fluorescence **VERY SLIGHT**  
Inscription(s) **LG799676975**  
Comments: HEARTS & ARROWS  
This Laboratory Grown Diamond was created by High Pressure High Temperature (HPHT) growth process. Indications of post-growth treatment.