



ELECTRONIC COPY

LABORATORY GROWN DIAMOND REPORT

June 8, 2026
IGI Report Number **LG799676948**
Description **LABORATORY GROWN DIAMOND**
Shape and Cutting Style **PRINCESS CUT**
Measurements **7.36 X 7.33 X 5.04 MM**

GRADING RESULTS

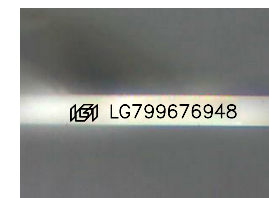
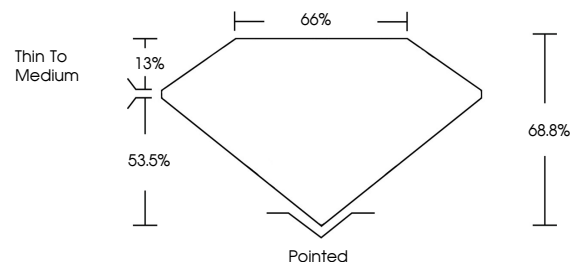
Carat Weight **2.40 CARATS**
Color Grade **D**
Clarity Grade **FLAWLESS**

ADDITIONAL GRADING INFORMATION

Polish **EXCELLENT**
Symmetry **EXCELLENT**
Fluorescence **NONE**
Inscription(s) **IGI LG799676948**

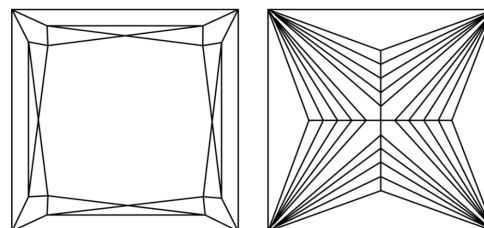
Comments: As Grown - No indication of post-growth treatment.
This Laboratory Grown Diamond was created by High Pressure High Temperature (HPHT) growth process. Type II

PROPORTIONS



Sample Image Used

CLARITY CHARACTERISTICS



KEY TO SYMBOLS

Red symbols indicate internal characteristics.
Green symbols indicate external characteristics.

COLOR

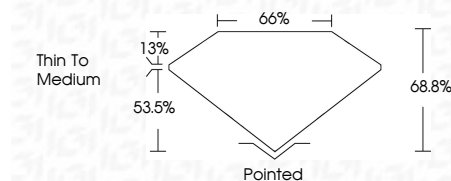
D E F G H I J Faint Very Light Light

CLARITY

FL	IF	VS ¹⁻²	VS ¹⁻²	SI ¹⁻²	I ¹⁻³
Flawless	Internally Flawless	Very Very Slightly Included	Very Slightly Included	Slightly Included	Included



June 8, 2026
IGI Report Number **LG799676948**
Description **LABORATORY GROWN DIAMOND**
Shape and Cutting Style **PRINCESS CUT**
Measurements **7.36 X 7.33 X 5.04 MM**
GRADING RESULTS
Carat Weight **2.40 CARATS**
Color Grade **D**
Clarity Grade **FLAWLESS**



ADDITIONAL GRADING INFORMATION

Polish **EXCELLENT**
Symmetry **EXCELLENT**
Fluorescence **NONE**
Inscription(s) **IGI LG799676948**
Comments: As Grown - No indication of post-growth treatment.
This Laboratory Grown Diamond was created by High Pressure High Temperature (HPHT) growth process. Type II



IGI



June 8, 2026
IGI Report No. **LG799676948**
PRINCESS CUT
7.36 X 7.33 X 5.04 MM
Carat Weight **2.40 CARATS**
Color Grade **D**
Clarity Grade **FLAWLESS**
Depth **68.8%**
Table **66%**
Girdle **Thin To Medium**
Culet **Pointed**
Polish **EXCELLENT**
Symmetry **EXCELLENT**
Fluorescence **NONE**
Inscription(s) **IGI LG799676948**
Comments: As Grown - No indication of post-growth treatment.
This Laboratory Grown Diamond was created by High Pressure High Temperature (HPHT) growth process. Type II