



**INTERNATIONAL
GEMOLOGICAL
INSTITUTE**

LABORATORY GROWN DIAMOND REPORT

June 8, 2026
 IGI Report Number **LG799676923**
 Description **LABORATORY GROWN DIAMOND**
 Shape and Cutting Style **PEAR BRILLIANT**
 Measurements **7.19 X 4.37 X 2.66 MM**

GRADING RESULTS

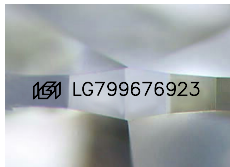
Carat Weight **0.50 CARAT**
 Color Grade **FANCY VIVID PINK**
 Clarity Grade **VS 1**
 Cut Grade **EXCELLENT**

ADDITIONAL GRADING INFORMATION

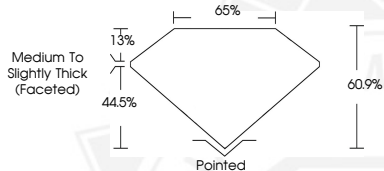
Polish **VERY GOOD**
 Symmetry **EXCELLENT**
 Fluorescence **SLIGHT**
 Inscription(s) **IGI LG799676923**

Comments: This Laboratory Grown Diamond was created by High Pressure High Temperature (HPHT) growth process. Indications of post-growth treatment.

ELECTRONIC COPY



Sample Image Used



June 8, 2026
 IGI Report Number **LG799676923**
PEAR BRILLIANT
LABORATORY GROWN DIAMOND
7.19 X 4.37 X 2.66 MM
 Carat Weight **0.50 CARAT**
 Color Grade **FANCY VIVID PINK**
 Clarity Grade **VS 1**
 Cut Grade **EXCELLENT**
 Polish **VERY GOOD**
 Symmetry **EXCELLENT**
 Fluorescence **SLIGHT**
 Inscription(s) **IGI LG799676923**

Comments: This Laboratory Grown Diamond was created by High Pressure High Temperature (HPHT) growth process. Indications of post-growth treatment.



June 8, 2026
 IGI Report Number **LG799676923**
PEAR BRILLIANT
LABORATORY GROWN DIAMOND
7.19 X 4.37 X 2.66 MM
 Carat Weight **0.50 CARAT**
 Color Grade **FANCY VIVID PINK**
 Clarity Grade **VS 1**
 Cut Grade **EXCELLENT**
 Polish **VERY GOOD**
 Symmetry **EXCELLENT**
 Fluorescence **SLIGHT**
 Inscription(s) **IGI LG799676923**

Comments: This Laboratory Grown Diamond was created by High Pressure High Temperature (HPHT) growth process. Indications of post-growth treatment.



THIS DOCUMENT WAS PRODUCED WITH THE FOLLOWING SECURITY MEASURES: SPECIAL DOCUMENT PAPER, INK SCREENS, WATERMARK, BACKGROUND DESIGNS, HOLOGRAM AND OTHER SECURITY FEATURES NOT LISTED AND DO EXCEED DOCUMENT SECURITY INDUSTRY GUIDELINES.

For terms & conditions and to verify this report, please visit www.igi.org