



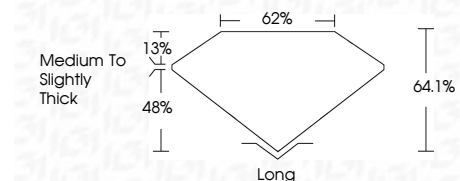
**ELECTRONIC COPY**

LG799676840  
Report verification at igi.org



May 28, 2026  
IGI Report Number **LG799676840**  
Description **LABORATORY GROWN DIAMOND**  
Shape and Cutting Style **EMERALD CUT**  
Measurements **9.42 X 6.27 X 4.02 MM**

**GRADING RESULTS**  
Carat Weight **2.35 CARATS**  
Color Grade **D**  
Clarity Grade **FLAWLESS**  
Cut Grade **EXCELLENT**



**ADDITIONAL GRADING INFORMATION**  
Polish **EXCELLENT**  
Symmetry **EXCELLENT**  
Fluorescence **NONE**  
Inscription(s) **IGI LG799676840**  
Comments: As Grown - No indication of post-growth treatment.  
This Laboratory Grown Diamond was created by High Pressure High Temperature (HPHT) growth process.  
Type II



May 28, 2026  
IGI Report No **LG799676840**  
**EMERALD CUT**  
Carat Weight **2.35 CARATS**  
Color Grade **D**  
Clarity Grade **FLAWLESS**  
Cut Grade **EXCELLENT**  
Depth **48%**  
Table **62%**  
Girdle **Medium To Slightly Thick**  
Length **64.1%**  
Culet **None**  
Polish **EXCELLENT**  
Symmetry **EXCELLENT**  
Fluorescence **NONE**  
Inscription(s) **IGI LG799676840**  
Comments: As Grown - No indication of post-growth treatment.  
This Laboratory Grown Diamond was created by High Pressure High Temperature (HPHT) growth process.  
Type II

**LABORATORY GROWN DIAMOND REPORT**

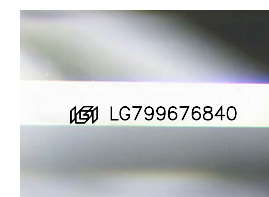
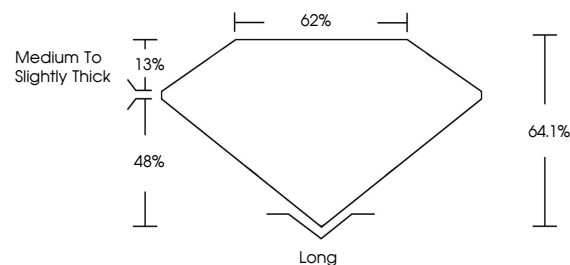
May 28, 2026  
IGI Report Number **LG799676840**  
Description **LABORATORY GROWN DIAMOND**  
Shape and Cutting Style **EMERALD CUT**  
Measurements **9.42 X 6.27 X 4.02 MM**

**GRADING RESULTS**  
Carat Weight **2.35 CARATS**  
Color Grade **D**  
Clarity Grade **FLAWLESS**  
Cut Grade **EXCELLENT**

**ADDITIONAL GRADING INFORMATION**  
Polish **EXCELLENT**  
Symmetry **EXCELLENT**  
Fluorescence **NONE**  
Inscription(s) **IGI LG799676840**

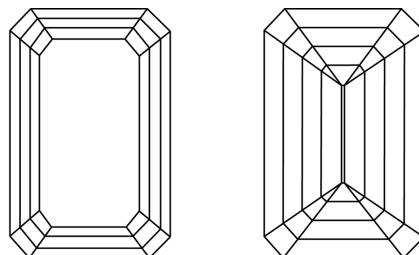
Comments: As Grown - No indication of post-growth treatment.  
This Laboratory Grown Diamond was created by High Pressure High Temperature (HPHT) growth process.  
Type II

**PROPORTIONS**



Sample Image Used

**CLARITY CHARACTERISTICS**



**KEY TO SYMBOLS**

Red symbols indicate internal characteristics.  
Green symbols indicate external characteristics.

**COLOR**

D E F G H I J Faint Very Light Light

**CLARITY**

FL	IF	VS <sup>1-2</sup>	VS <sup>1-2</sup>	SI <sup>1-2</sup>	I <sup>1-3</sup>
Flawless	Internally Flawless	Very Very Slightly Included	Very Slightly Included	Slightly Included	Included

