



ELECTRONIC COPY

LG799676135
Report verification at igi.org



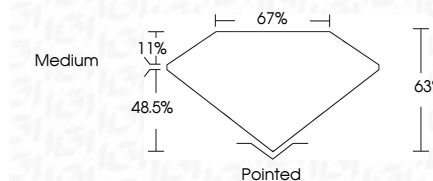
May 6, 2026
IGI Report Number **LG799676135**
Description **LABORATORY GROWN DIAMOND**

Shape and Cutting Style **CUT CORNERED
RECTANGULAR MODIFIED
BRILLIANT**

Measurements **9.39 X 5.67 X 3.57 MM**

GRADING RESULTS

Carat Weight **1.63 CARAT**
Color Grade **D**
Clarity Grade **VVS 2**



ADDITIONAL GRADING INFORMATION

Polish **EXCELLENT**
Symmetry **EXCELLENT**
Fluorescence **NONE**
Inscription(s) **IGI LG799676135**
Comments: This Laboratory Grown Diamond was created by Chemical Vapor Deposition (CVD) growth process. Type IIa



May 6, 2026
IGI Report No LG799676135
CUT CORNERED RECT. MODIFIED BRILLIANT
1.63 CARAT
D
9.39 X 5.67 X 3.57 MM
Color Grade
VVS 2
63%
67%
Medium
Pointed
EXCELLENT
EXCELLENT
NONE
IGI LG799676135
Comments: This Laboratory Grown Diamond was created by Chemical Vapor Deposition (CVD) growth process. Type IIa

LABORATORY GROWN DIAMOND REPORT

May 6, 2026
IGI Report Number **LG799676135**
Description **LABORATORY GROWN DIAMOND**
Shape and Cutting Style **CUT CORNERED RECTANGULAR
MODIFIED BRILLIANT**
Measurements **9.39 X 5.67 X 3.57 MM**

GRADING RESULTS

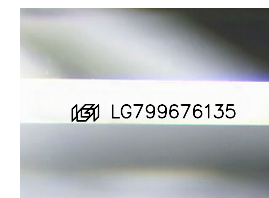
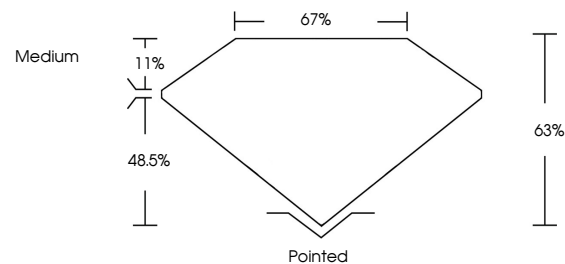
Carat Weight **1.63 CARAT**
Color Grade **D**
Clarity Grade **VVS 2**

ADDITIONAL GRADING INFORMATION

Polish **EXCELLENT**
Symmetry **EXCELLENT**
Fluorescence **NONE**
Inscription(s) **IGI LG799676135**

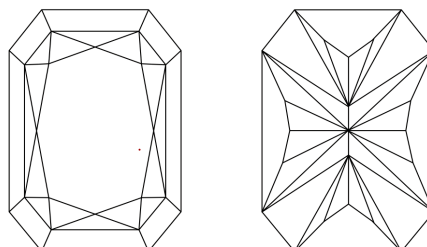
Comments: This Laboratory Grown Diamond was created by Chemical Vapor Deposition (CVD) growth process. Type IIa

PROPORTIONS



Sample Image Used

CLARITY CHARACTERISTICS



KEY TO SYMBOLS

Red symbols indicate internal characteristics.
Green symbols indicate external characteristics.

COLOR

D E F G H I J Faint Very Light Light

CLARITY

FL	IF	VVS ¹⁻²	VS ¹⁻²	SI ¹⁻²	I ¹⁻³
Flawless	Internally Flawless	Very Very Slightly Included	Very Slightly Included	Slightly Included	Included

