



ELECTRONIC COPY

LG799675920
Report verification at igi.org



May 13, 2026

IGI Report Number **LG799675920**

Description **LABORATORY GROWN DIAMOND**

Shape and Cutting Style **EMERALD CUT**

Measurements **9.79 X 6.94 X 4.93 MM**

GRADING RESULTS

Carat Weight **3.53 CARATS**

Color Grade **FANCY INTENSE PINK**

Clarity Grade **VS 2**

May 13, 2026
IGI Report Number **LG799675920**
Description **LABORATORY GROWN DIAMOND**
Shape and Cutting Style **EMERALD CUT**
Measurements **9.79 X 6.94 X 4.93 MM**

GRADING RESULTS

Carat Weight **3.53 CARATS**

Color Grade **FANCY INTENSE PINK**

Clarity Grade **VS 2**

ADDITIONAL GRADING INFORMATION

Polish **EXCELLENT**

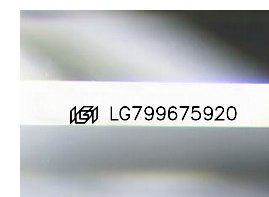
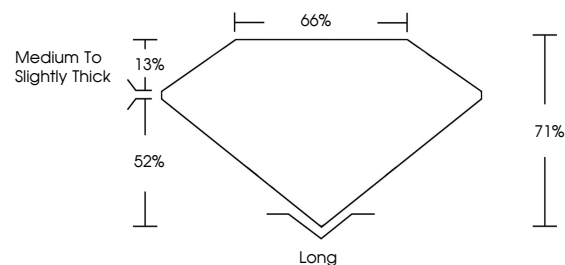
Symmetry **EXCELLENT**

Fluorescence **SLIGHT**

Inscription(s) **IGI LG799675920**

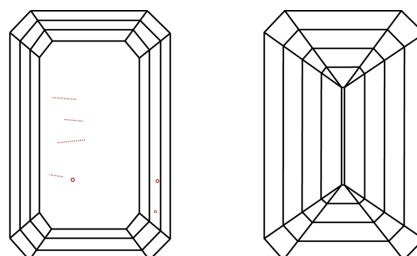
Comments: This Laboratory Grown Diamond was created by Chemical Vapor Deposition (CVD) growth process.
Indications of post-growth treatment.

PROPORTIONS



Sample Image Used

CLARITY CHARACTERISTICS



KEY TO SYMBOLS

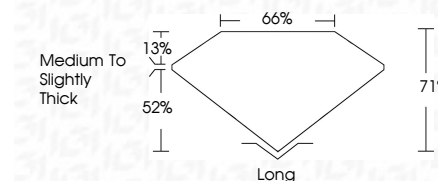
Red symbols indicate internal characteristics.
Green symbols indicate external characteristics.

COLOR

D E F G H I J Faint Very Light Light

CLARITY

FL	IF	VS ¹⁻²	VS ¹⁻²	SI ¹⁻²	I ¹⁻³
Flawless	Internally Flawless	Very Very Slightly Included	Very Slightly Included	Slightly Included	Included



ADDITIONAL GRADING INFORMATION

Polish **EXCELLENT**

Symmetry **EXCELLENT**

Fluorescence **SLIGHT**

Inscription(s) **IGI LG799675920**

Comments: This Laboratory Grown Diamond was created by Chemical Vapor Deposition (CVD) growth process.
Indications of post-growth treatment.



May 13, 2026
IGI Report No **LG799675920**
EMERALD CUT
3.53 CARATS
Carat Weight
FANCY INTENSE PINK
Color Grade
VS 2
Clarity Grade
71%
Table
66%
Girdle
Medium to Slightly Thick
Culet
Long
Polish
EXCELLENT
Symmetry
EXCELLENT
Fluorescence
SLIGHT
Inscription(s)
IGI LG799675920

Comments: This Laboratory Grown Diamond was created by Chemical Vapor Deposition (CVD) growth process.
Indications of post-growth treatment.