



ELECTRONIC COPY

LG799673019 Report verification at igi.org



May 8, 2026 IGI Report Number LG799673019 Description LABORATORY GROWN DIAMOND Shape and Cutting Style ROUND BRILLIANT Measurements 6.59 - 6.62 X 3.87 MM GRADING RESULTS Carat Weight 1.03 CARAT Color Grade D Clarity Grade VVS 2 Cut Grade EXCELLENT

May 8, 2026 IGI Report Number LG799673019 Description LABORATORY GROWN DIAMOND Shape and Cutting Style ROUND BRILLIANT Measurements 6.59 - 6.62 X 3.87 MM

GRADING RESULTS

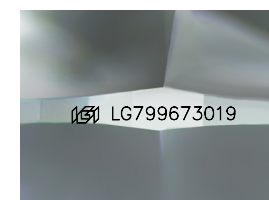
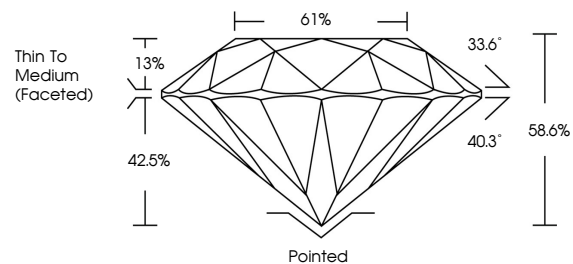
Carat Weight 1.03 CARAT Color Grade D Clarity Grade VVS 2 Cut Grade EXCELLENT

ADDITIONAL GRADING INFORMATION

Polish EXCELLENT Symmetry EXCELLENT Fluorescence NONE Inscription(s) IGI LG799673019

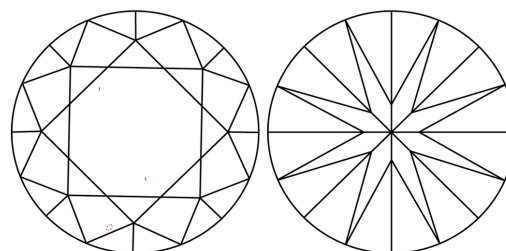
Comments: This Laboratory Grown Diamond was created by Chemical Vapor Deposition (CVD) growth process. Type IIa

PROPORTIONS



Sample Image Used

CLARITY CHARACTERISTICS



KEY TO SYMBOLS

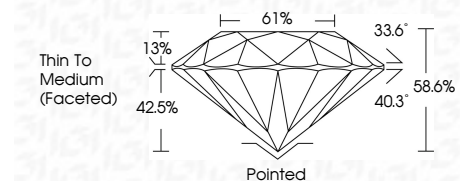
Red symbols indicate internal characteristics. Green symbols indicate external characteristics.

COLOR

D E F G H I J Faint Very Light Light

CLARITY

FL IF VVS 1-2 VS 1-2 SI 1-2 I 1-3 Flawless Internally Flawless Very Very Slightly Included Very Slightly Included Slightly Included Included



ADDITIONAL GRADING INFORMATION

Polish EXCELLENT Symmetry EXCELLENT Fluorescence NONE Inscription(s) IGI LG799673019 Comments: This Laboratory Grown Diamond was created by Chemical Vapor Deposition (CVD) growth process. Type IIa



May 8, 2026 IGI Report No LG799673019 ROUND BRILLIANT 6.59 - 6.62 X 3.87 MM 1.03 CARAT D VVS 2 EXCELLENT 61% Thin To Medium (Faceted) Pointed EXCELLENT EXCELLENT NONE IGI LG799673019 Comments: This Laboratory Grown Diamond was created by Chemical Vapor Deposition (CVD) growth process. Type IIa