



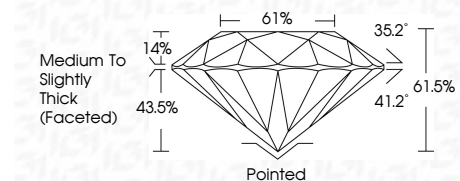
**ELECTRONIC COPY**

LG799670984  
Report verification at igi.org



May 14, 2026  
IGI Report Number **LG799670984**  
Description **LABORATORY GROWN DIAMOND**  
Shape and Cutting Style **ROUND BRILLIANT**  
Measurements **6.88 - 6.92 X 4.24 MM**

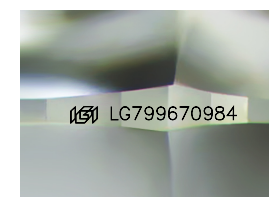
**GRADING RESULTS**  
Carat Weight **1.26 CARAT**  
Color Grade **D**  
Clarity Grade **VVS 2**  
Cut Grade **EXCELLENT**



**ADDITIONAL GRADING INFORMATION**  
Polish **EXCELLENT**  
Symmetry **EXCELLENT**  
Fluorescence **NONE**  
Inscription(s) **IGI LG799670984**  
Comments: As Grown - No indication of post-growth treatment.  
This Laboratory Grown Diamond was created by High Pressure High Temperature (HPHT) growth process.  
Type II

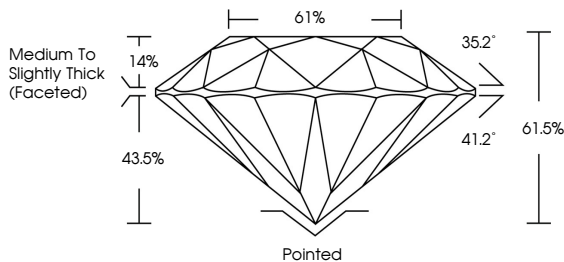


May 14, 2026  
IGI Report No LG799670984  
**ROUND BRILLIANT**  
6.88 - 6.92 X 4.24 MM  
1.26 CARAT  
Color Grade **D**  
Clarity Grade **VVS 2**  
Cut Grade **EXCELLENT**  
Depth **61.05%**  
Table **61%**  
Girdle **Medium To Slightly Thick (Faceted)**  
Culet **Pointed**  
Polish **EXCELLENT**  
Symmetry **EXCELLENT**  
Fluorescence **NONE**  
Inscriptions(s) **IGI LG799670984**  
Comments: As Grown - No indication of post-growth treatment.  
This Laboratory Grown Diamond was created by High Pressure High Temperature (HPHT) growth process.  
Type II

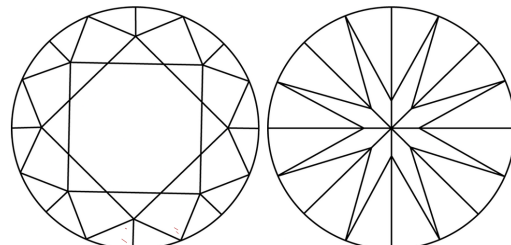


Sample Image Used

**PROPORTIONS**



**CLARITY CHARACTERISTICS**



**KEY TO SYMBOLS**  
Red symbols indicate internal characteristics.  
Green symbols indicate external characteristics.

**COLOR**

D	E	F	G	H	I	J	Faint	Very Light	Light
---	---	---	---	---	---	---	-------	------------	-------

**CLARITY**

FL	IF	VVS <sup>1-2</sup>	VS <sup>1-2</sup>	SI <sup>1-2</sup>	I <sup>1-3</sup>
Flawless	Internally Flawless	Very Very Slightly Included	Very Slightly Included	Slightly Included	Included

