



**ELECTRONIC COPY**

LG799670797  
Report verification at igi.org



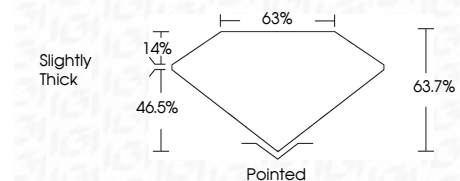
May 14, 2026  
IGI Report Number **LG799670797**  
Description **LABORATORY GROWN DIAMOND**

Shape and Cutting Style **CUT CORNERED  
RECTANGULAR MODIFIED  
BRILLIANT**

Measurements **7.19 X 5.10 X 3.25 MM**

**GRADING RESULTS**

Carat Weight **1.02 CARAT**  
Color Grade **E**  
Clarity Grade **VS 1**



**ADDITIONAL GRADING INFORMATION**

Polish **EXCELLENT**  
Symmetry **EXCELLENT**  
Fluorescence **NONE**

Inscription(s) **IGI LG799670797**  
Comments: As Grown - No indication of post-growth treatment.  
This Laboratory Grown Diamond was created by High Pressure High Temperature (HPHT) growth process.  
Type II



May 14, 2026  
IGI Report No **LG799670797**  
**CUT CORNERED RECT. MODIFIED BRILLIANT**  
7.19 X 5.10 X 3.25 MM  
Carat Weight **1.02 CARAT**  
Color Grade **E**  
Clarity Grade **VS 1**  
Depth **46.5%**  
Table **1.4%**  
Girdle **Slightly Thick**  
Culet **Pointed**  
Polish **EXCELLENT**  
Symmetry **EXCELLENT**  
Fluorescence **NONE**  
Inscription(s) **IGI LG799670797**  
Comments: As Grown - No indication of post-growth treatment.  
This Laboratory Grown Diamond was created by High Pressure High Temperature (HPHT) growth process.  
Type II

**LABORATORY GROWN DIAMOND REPORT**

May 14, 2026  
IGI Report Number **LG799670797**  
Description **LABORATORY GROWN DIAMOND**  
Shape and Cutting Style **CUT CORNERED RECTANGULAR  
MODIFIED BRILLIANT**  
Measurements **7.19 X 5.10 X 3.25 MM**

**GRADING RESULTS**

Carat Weight **1.02 CARAT**  
Color Grade **E**  
Clarity Grade **VS 1**

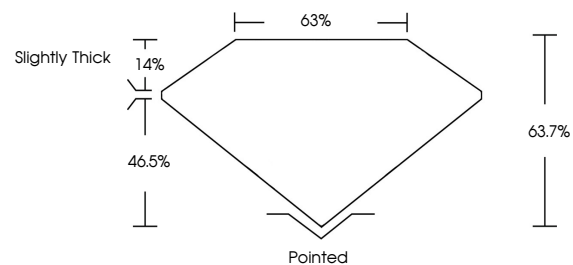
**ADDITIONAL GRADING INFORMATION**

Polish **EXCELLENT**  
Symmetry **EXCELLENT**  
Fluorescence **NONE**

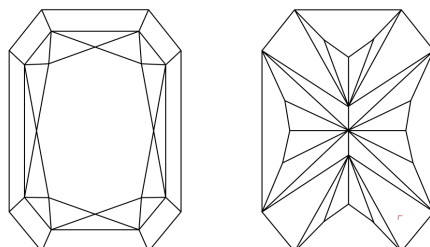
Inscription(s) **IGI LG799670797**

Comments: As Grown - No indication of post-growth treatment.  
This Laboratory Grown Diamond was created by High Pressure High Temperature (HPHT) growth process.  
Type II

**PROPORTIONS**

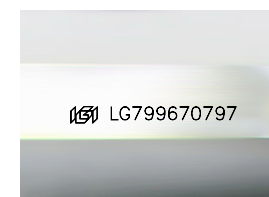


**CLARITY CHARACTERISTICS**



**KEY TO SYMBOLS**

Red symbols indicate internal characteristics.  
Green symbols indicate external characteristics.



Sample Image Used

**COLOR**

D E F G H I J Faint Very Light Light

**CLARITY**

FL	IF	VS <sup>1-2</sup>	VS <sup>1-2</sup>	SI <sup>1-2</sup>	I <sup>1-3</sup>
Flawless	Internally Flawless	Very Very Slightly Included	Very Slightly Included	Slightly Included	Included

