



ELECTRONIC COPY

LG799670409
Report verification at igi.org



June 1, 2026
IGI Report Number: LG799670409
Description: LABORATORY GROWN DIAMOND
Shape and Cutting Style: ROUND BRILLIANT
Measurements: 8.00 - 8.05 X 4.99 MM
GRADING RESULTS
Carat Weight: 2.00 CARATS
Color Grade: D
Clarity Grade: FLAWLESS
Cut Grade: EXCELLENT

June 1, 2026
IGI Report Number: LG799670409
Description: LABORATORY GROWN DIAMOND
Shape and Cutting Style: ROUND BRILLIANT
Measurements: 8.00 - 8.05 X 4.99 MM

GRADING RESULTS

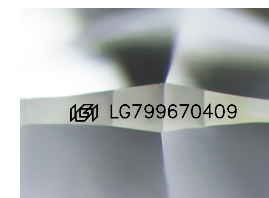
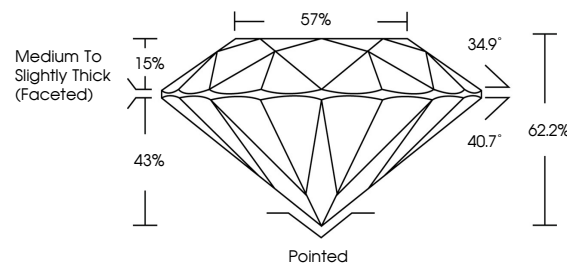
Carat Weight: 2.00 CARATS
Color Grade: D
Clarity Grade: FLAWLESS
Cut Grade: EXCELLENT

ADDITIONAL GRADING INFORMATION

Polish: EXCELLENT
Symmetry: EXCELLENT
Fluorescence: NONE
Inscription(s): IGI LG799670409

Comments: As Grown - No indication of post-growth treatment. This Laboratory Grown Diamond was created by High Pressure High Temperature (HPHT) growth process. Type II

PROPORTIONS



Sample Image Used

CLARITY CHARACTERISTICS



KEY TO SYMBOLS

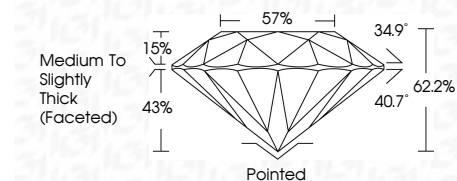
Red symbols indicate internal characteristics. Green symbols indicate external characteristics.

COLOR

D E F G H I J Faint Very Light Light

CLARITY

Table with columns: FL, IF, VS 1-2, VS 1-2, SI 1-2, I 1-3 and corresponding descriptions: Flawless, Internally Flawless, Very Very Slightly Included, Very Slightly Included, Slightly Included, Included



ADDITIONAL GRADING INFORMATION

Polish: EXCELLENT
Symmetry: EXCELLENT
Fluorescence: NONE
Inscription(s): IGI LG799670409
Comments: As Grown - No indication of post-growth treatment. This Laboratory Grown Diamond was created by High Pressure High Temperature (HPHT) growth process. Type II



IGI



June 1, 2026
IGI Report No: LG799670409
ROUND BRILLIANT
2.00 CARATS
Color Grade: D
Clarity Grade: FLAWLESS
Depth: 62.2%
Table: 57%
Girdle: Medium To Slightly Thick (Faceted)
Culet: Pointed
Polish: EXCELLENT
Symmetry: EXCELLENT
Fluorescence: NONE
Inscriptions(s): IGI LG799670409
Comments: As Grown - No indication of post-growth treatment. This Laboratory Grown Diamond was created by High Pressure High Temperature (HPHT) growth process. Type II