



ELECTRONIC COPY

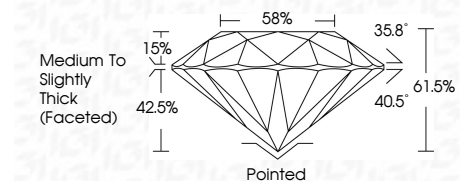
LG799669396 Report verification at igi.org



May 15, 2026 IGI Report Number LG799669396 Description LABORATORY GROWN DIAMOND Shape and Cutting Style ROUND BRILLIANT Measurements 6.50 - 6.52 X 4.00 MM

GRADING RESULTS

Carat Weight 1.05 CARAT Color Grade F Clarity Grade VVS 2 Cut Grade IDEAL



ADDITIONAL GRADING INFORMATION

Polish EXCELLENT Symmetry EXCELLENT Fluorescence NONE Inscription(s) LG799669396 Comments: As Grown - No indication of post-growth treatment. This Laboratory Grown Diamond was created by High Pressure High Temperature (HPHT) growth process. Type II



May 15, 2026 IGI Report No LG799669396 ROUND BRILLIANT 6.50 - 6.52 X 4.00 MM 1.05 CARAT F VVS 2 IDEAL 61.5% 58% Medium To Slightly Thick (Faceted) Pointed EXCELLENT EXCELLENT NONE LG799669396

LABORATORY GROWN DIAMOND REPORT

May 15, 2026 IGI Report Number LG799669396 Description LABORATORY GROWN DIAMOND Shape and Cutting Style ROUND BRILLIANT Measurements 6.50 - 6.52 X 4.00 MM

GRADING RESULTS

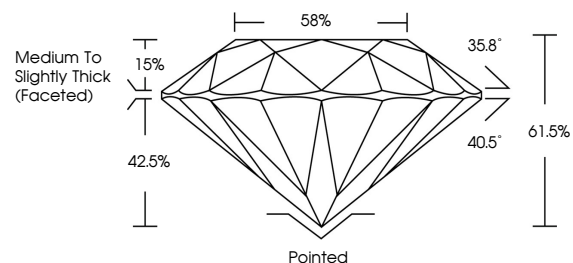
Carat Weight 1.05 CARAT Color Grade F Clarity Grade VVS 2 Cut Grade IDEAL

ADDITIONAL GRADING INFORMATION

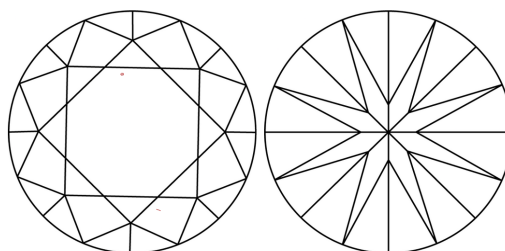
Polish EXCELLENT Symmetry EXCELLENT Fluorescence NONE Inscription(s) LG799669396

Comments: As Grown - No indication of post-growth treatment. This Laboratory Grown Diamond was created by High Pressure High Temperature (HPHT) growth process. Type II

PROPORTIONS

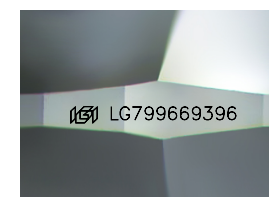


CLARITY CHARACTERISTICS



KEY TO SYMBOLS

Red symbols indicate internal characteristics. Green symbols indicate external characteristics.



Sample Image Used

COLOR

D E F G H I J Faint Very Light Light

CLARITY

FL IF VVS 1-2 VS 1-2 SI 1-2 I 1-3 Flawless Internally Flawless Very Very Slightly Included Very Slightly Included Slightly Included Included

